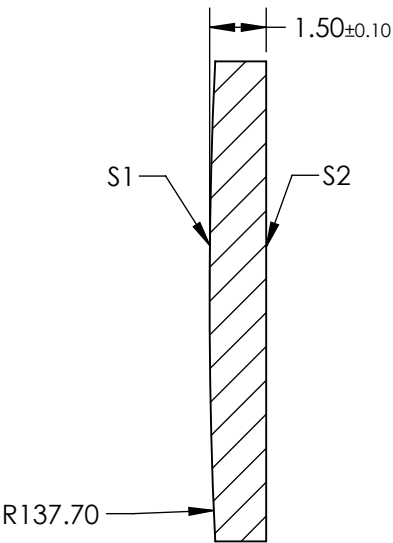
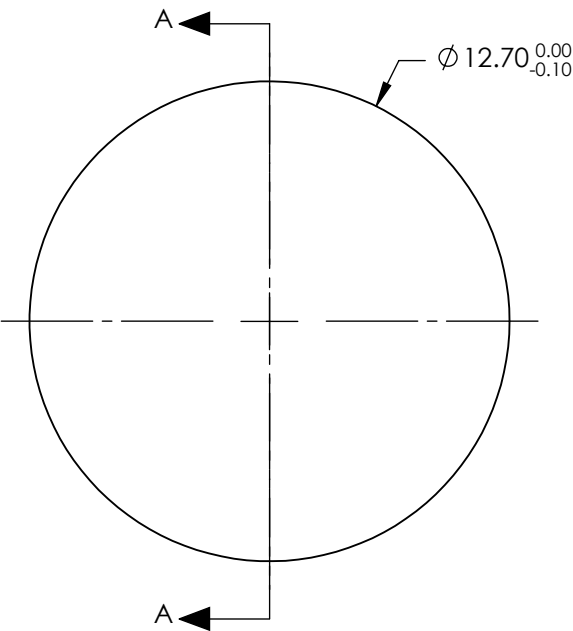


- NOTES:
- 1. SUBSTRATE: IR GRADE FUSED SILICA
  - 2. COATING:  
S1 & S2: R(ABS) <0.1% @ 1900 - 2200nm
  - 3. CENTERING: < 3 ARCMIN
  - 4. RoHS: COMPLIANT


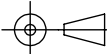
**FOR INFORMATION ONLY:  
DO NOT MANUFACTURE  
PARTS TO THIS DRAWING**



SECTION A-A

SPECIFICATIONS SUBJECT TO CHANGE WITHOUT NOTICE  
DIMENSIONS ARE FOR REFERENCE ONLY

|                 | S1                   | S2                   |
|-----------------|----------------------|----------------------|
| SHAPE           | CONVEX               | PLANO                |
| SURFACE QUALITY | 20-10                | 20-10                |
| CLEAR APERTURE  | Ø11.43               | Ø11.43               |
| BEVEL           | PROTECTIVE AS NEEDED | PROTECTIVE AS NEEDED |

|   |    |   |  |
|---|----|---|--|
| EFL: 300.35 mm  |    | <div> Edmund Optics®</div> |  |
| BFL: 299.32 mm  |    |   |  |
| <div>THIRD ANGLE<br/>PROJECTION</div>  |    | TITLE   | 12.7mm Diameter x 300mm FL, 19002200nm<br>Coated, IR Ultrafast Thin PCX Lens |
| ALL DIMS IN   | mm | DWG NO  | 11621  |
|   |    |   | SHEET<br>1 OF 1  |