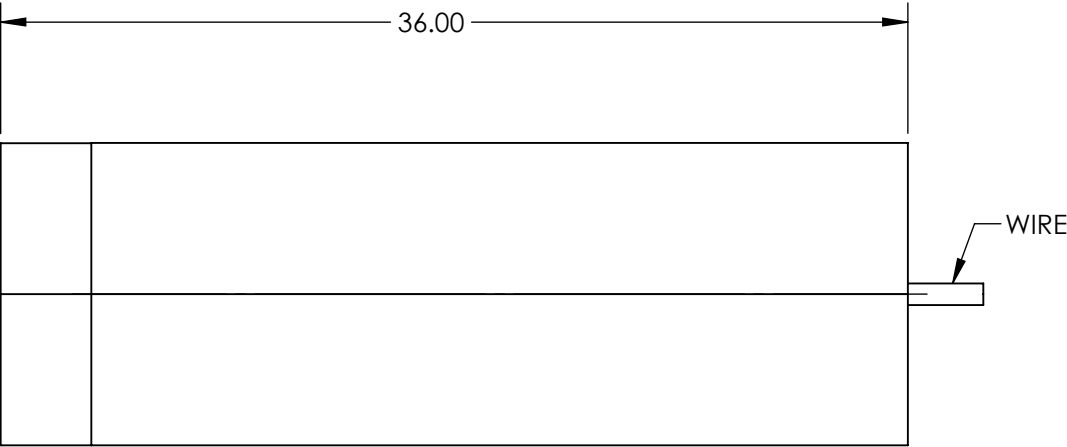
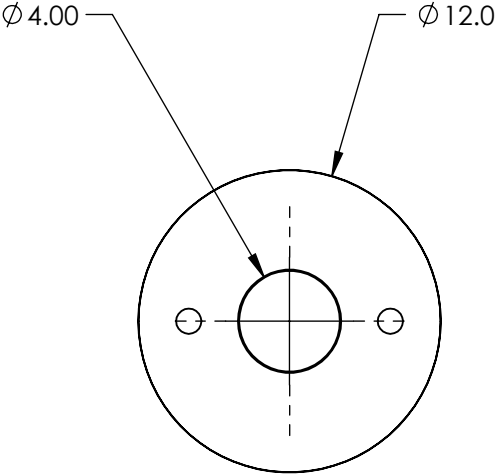
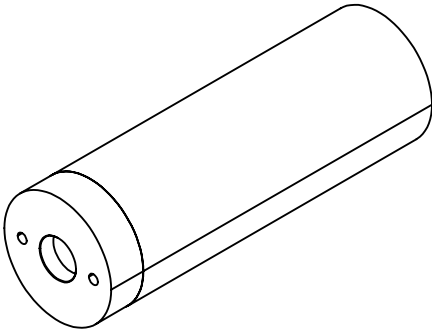


NOTES:

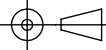
- 1. LASER CLASS:
IIIb
- 2. BEAM DIAMETER(mm): 3.5 Typical
BEAM DIVERGENCE: <0.5 mrad
- 3. MODULATION FREQUENCY: 0 - 10 kHz
- 4. OPERATING TEMPERATURE: 15 to 30 °C
OPERATING VOLTAGE: 5V
- 5. OUTPUT POWER: 10mW
- 6. WAVELENGTH RANGE: 405±5 nm



SPECIFICATIONS SUBJECT TO CHANGE WITHOUT NOTICE
DIMENSIONS ARE FOR REFERENCE ONLY

**FOR INFORMATION ONLY:
DO NOT MANUFACTURE
PARTS TO THIS DRAWING**

EO® **Edmund Optics®**

THIRD ANGLE PROJECTION 		TITLE	10mW, 405nm Violet Alignment Laser Diode Module	
ALL DIMS IN	mm	DWG NO	37025	SHEET 1 OF 1