

NOTES:

- 1. SUBSTRATE:
FUSED SILICA
- 2. SURFACE S2 TO BE PARALLEL TO S1 TO WITHIN < 10 ARCMIN
- 3. COATING (APPLY ACROSS COATING APERTURE)

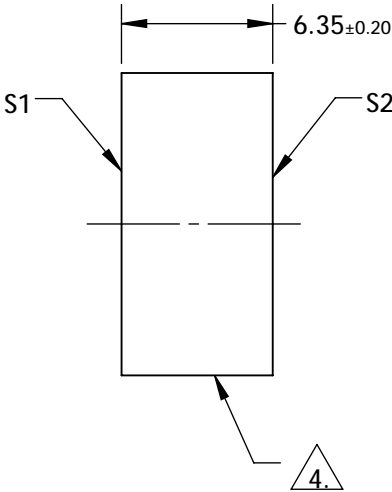
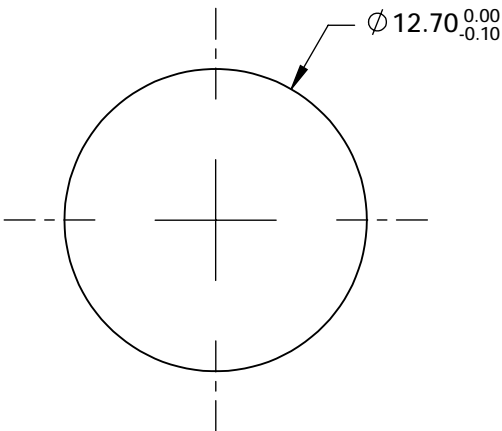
S1: R(AVG) > 99.8% @ 725 - 1000nm @ 45° AOI (P-POLARIZATION)
-70fs² @ 725 - 1000nm (P-POLARIZATION)

S2: NONE

DAMAGE THRESHOLD: 0.2 J/cm² @ 800nm, 50fs, 1kHz, 100µm BEAM DIAMETER

4. FINE GRIND SURFACE

- 5. ROHS COMPLIANT



**FOR INFORMATION ONLY:
DO NOT MANUFACTURE
PARTS TO THIS DRAWING**

SPECIFICATIONS SUBJECT TO CHANGE WITHOUT NOTICE
DIMENSIONS ARE FOR REFERENCE ONLY

	S1	S2
SHAPE	PLANO	PLANO
IRREGULARITY (P-V) @632.8nm	λ/10	N/A
CLEAR APERTURE	Ø10.16	N/A
BEVEL	PROTECTIVE AS NEEDED	PROTECTIVE AS NEEDED

THIRD ANGLE PROJECTION	
ALL DIMS IN	mm

TITLE	Ø12.7mm Dia., 45°, 725 - 1000nm ULTRAFAST CHIRPED MIRROR		
DWG NO	12420	SHEET 1 OF 1	