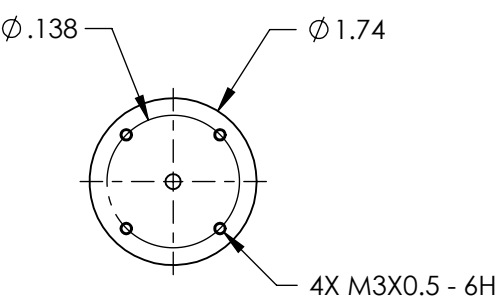
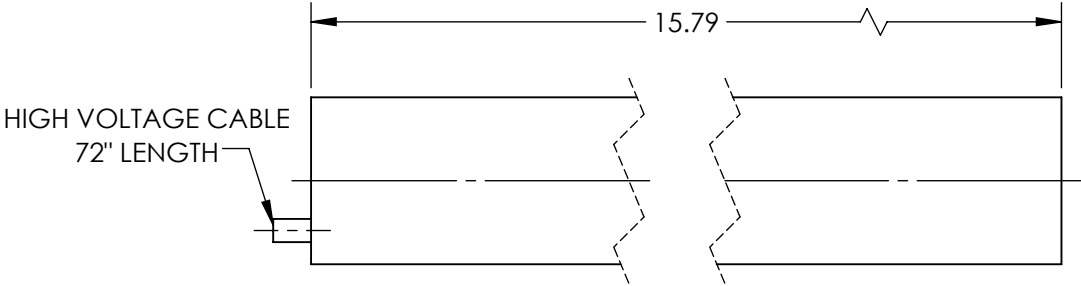


NOTES:
1. RoHS: EXEMPT

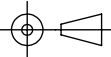
FOR INFORMATION ONLY:
DO NOT MANUFACTURE
PARTS TO THIS DRAWING



	VALUE
WEIGHT (lbs)	1.3
WARM-UP TIME	10
RMS NOISE	30 Hz - 10 MHz: 0.2%
OPERATING TEMPERTURE (°C)	-40 to +70
OPERATING HUMIDITY	0 TO 100%, NON-CONDENSING
MODE PURITY (TEM00)	>95%
MINIMUM OUTPUT POWER, TEM00 (mW)	7
MAXIMUM DRIFT	MEAN POWER OVER 8 HRS: ± 2.5
LONGITUDINAL MODE SPACING, NOMINAL (MHz)	435
LASER CLASS - CDRH	IIIb
COLOR	RED
POINTING STABILITY AFTER WARM UP (mrad/°C)	AFTER 15 MIN: <0.02
POINTING STABILITY (mrad/°C)	FROM COLD START, 25°: <0.1
OUTPUT POWER (mW)	7
BEAM DIAMETER (mm)	0.81
BEAM DIVERGENCE (mrad)	1.00 ± 3
POLARIZATION	RANDOM
STATIC ALIGNMENT	CENTERED TO OUTER CYLINDER: $\pm 0.01"$ PARALLEL TO OUTER CYLINDER: ± 1.0 MRAD

SPECIFICATIONS SUBJECT TO CHANGE WITHOUT NOTICE
DIMENSIONS ARE FOR REFERENCE ONLY

EO® **Edmund Optics**®

THIRD ANGLE PROJECTION 		TITLE	Model 1137, 7mW Random Polarization, Lumentum HeNe Laser	
ALL DIMS IN	in	DWG NO	62724	SHEET 1 OF 1