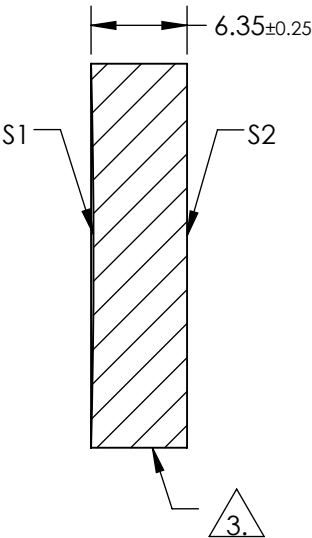
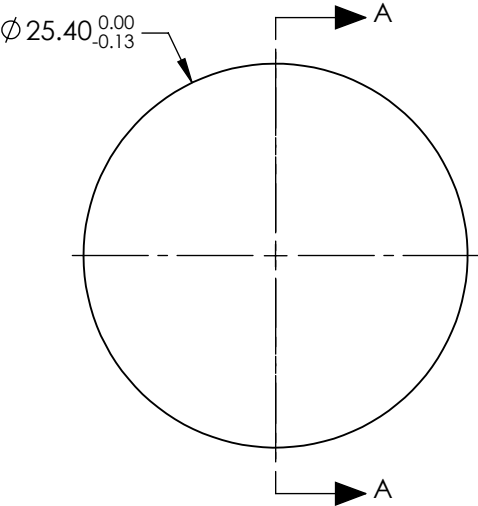
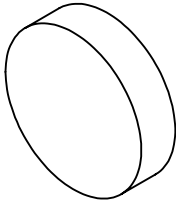


NOTES:

- 1. MATERIAL: FUSED SILICA
- 2. COATING (APPLY ACROSS COATING APERTURE)
S1: Mo/Si MULTILAYER
CENTER WAVELENGTH: 13.5nm ± 0.18nm
BANDWIDTH(FWHM): 5° AOI, 0.50nm
R(ABS) > 60% S-POLARIZATION AT 13.5nm @ 5° AOI
S2: NONE

3. FINE GRIND SURFACE

- 4. RoHS: COMPLIANT



SECTION A-A


FOR INFORMATION ONLY:
DO NOT MANUFACTURE
PARTS TO THIS DRAWING

SPECIFICATIONS SUBJECT TO CHANGE WITHOUT NOTICE
DIMENSIONS ARE FOR REFERENCE ONLY

	S1	S2
SHAPE	CONCAVE	PLANO
RADIUS	500	INFINITY
EFFECTIVE FOCAL LENGTH	250	N/A
SURFACE QUALITY	20-10	20-10
CLEAR APERTURE	Ø20.32	N/A
COATING APERTURE	Ø20.32	N/A
BEVEL	PROTECTIVE AS NEEDED	PROTECTIVE AS NEEDED

THIRD ANGLE
PROJECTION

ALL DIMS IN mm

 Edmund Optics®

TITLE	EUV SPHERICAL MIRROR 13.5nm Ø25.4 x 250		
DWG NO	11730	SHEET 1 OF 1	