

NOTES:

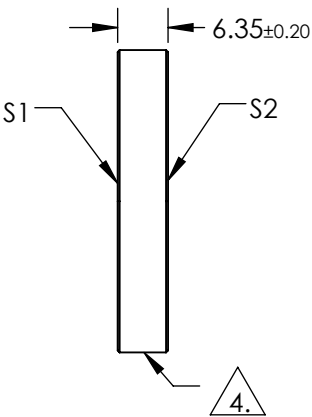
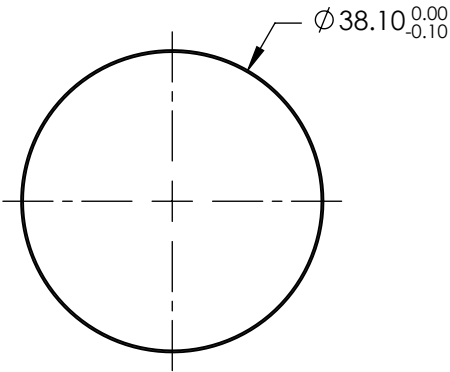
1. SUBSTRATE:  
Fused Silica
2. S2 TO BE PARALLEL TO S1 TO WITHIN <3 ARCMINS
3. COATING (APPLY ACROSS COATING APERTURE)

S1 & S2: 343nm High Laser AR Coating  
R(ABS) < 0.10% @ 343nm @ 0° AOI

DAMAGE THRESHOLD,  
PUSLED: 7.5 J/cm² @ 20ns , 20 Hz @ 343nm

4. FINE GROUND SURFACE

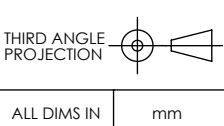
5. CLEAR APERTURE AND COATING APERTURE ARE CENTERED ON SURFACE
6. ROHS COMPLIANT



**FOR INFORMATION ONLY:  
DO NOT MANUFACTURE  
PARTS TO THIS DRAWING**

SPECIFICATIONS SUBJECT TO CHANGE WITHOUT NOTICE  
DIMENSIONS ARE FOR REFERENCE ONLY

	S1	S2
SHAPE	PLANO	PLANO
SURFACE QUALITY	10-5	10-5
SURFACE FLATNESS	0.10 WAVE	0.10 WAVE
CLEAR APERTURE	Ø34.29	Ø34.29
COATING APERTURE	Ø34.29	Ø34.29
BEVEL	PROTECTIVE AS NEEDED	PROTECTIVE AS NEEDED



**Edmund Optics®**

TITLE	0.1R 343nm Laser Window 38.1 Dia x 6.35		
DWG NO	11233	SHEET 1 OF 1	