
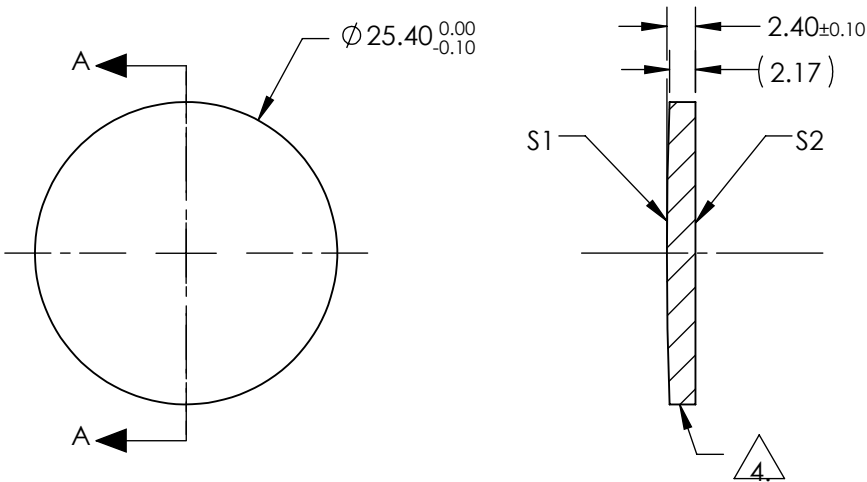


NOTES:


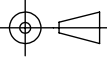
1. SUBSTRATE:  
II-VI Infrared ZnSe
2. CENTERING TOLERANCE:  
EDGE THICKNESS VARIATION MEASURED AT THE CLEAR APERTURE OF S1  
NOT TO EXCEED 12.7 $\mu$ m
3. COATING (APPLY ACROSS COATING APERTURE)  
  
S1 & S2: NONE
4.  FINE GROUND SURFACE
5. POWER, IRREGULARITY, AND SURFACE QUALITY SPECIFICATIONS APPLY  
ACROSS CLEAR APERTURE
6. WAVELENGTH RANGE: 600 - 18000nm
7. SURFACE ROUGHNESS: <50 Å
8. ROHS: COMPLIANT



**FOR INFORMATION ONLY:  
DO NOT MANUFACTURE  
PARTS TO THIS DRAWING**

SECTION A-A

SPECIFICATIONS SUBJECT TO CHANGE WITHOUT NOTICE  
DIMENSIONS ARE FOR REFERENCE ONLY

	S1	S2				
SHAPE	CONVEX	PLANO				
RADIUS	350.670	INFINITY	EFL (AT 10.6 microns)	250.00	 <b>Edmund Optics®</b>	
SURFACE QUALITY	40-20	40-20	BFL (AT 10.6 microns)	249.00		
CLEAR APERTURE	90%	90%			TITLE	25.4mm Dia. x 250mm FL, Uncoated, ZnSe Plano-Convex Lens
POWER at 10.6 $\mu$ m	$\lambda/10$	$\lambda/10$			DWG NO	39536
IRREGULARITY at 10.6 $\mu$ m	$\lambda/20$	$\lambda/20$	ALL DIMS IN	mm		SHEET 1 OF 1
BEVEL	PROTECTIVE AS NEEDED	PROTECTIVE AS NEEDED				