
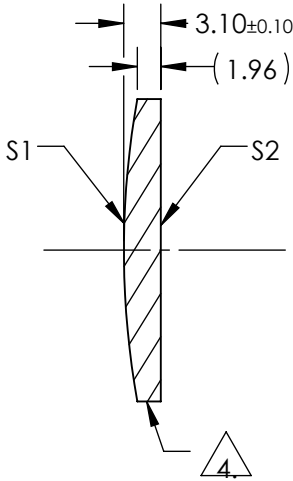
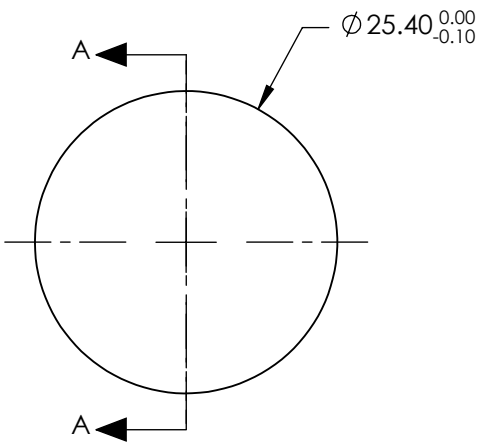


NOTES:

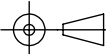

1. SUBSTRATE:  
II-VI Infrared ZnSe
2. CENTERING TOLERANCE:  
EDGE THICKNESS VARIATION MEASURED AT THE CLEAR APERTURE OF S1  
NOT TO EXCEED 12.7 $\mu$ m
3. COATING (APPLY ACROSS COATING APERTURE)  
  
S1 & S2: NONE
4.  FINE GROUND SURFACE
5. POWER, IRREGULARITY, AND SURFACE QUALITY SPECIFICATIONS APPLY  
ACROSS CLEAR APERTURE
6. WAVELENGTH RANGE: 600 - 18000nm
7. SURFACE ROUGHNESS: <50 Å
8. ROHS: COMPLIANT



SECTION A-A

**FOR INFORMATION ONLY:  
DO NOT MANUFACTURE  
PARTS TO THIS DRAWING**

SPECIFICATIONS SUBJECT TO CHANGE WITHOUT NOTICE  
DIMENSIONS ARE FOR REFERENCE ONLY

	S1	S2	DIMENSIONS ARE FOR REFERENCE ONLY										
SHAPE	CONVEX	PLANO	<div><div>EFL (AT 10.6 microns)</div><div>50.80</div></div> <div><div>BFL (AT 10.6 microns)</div><div>49.51</div></div> <div><div><div>THIRD ANGLE PROJECTION</div><div></div></div><div><div>TITLE</div><div>25.4mm Dia. x 50.8mm FL, Uncoated, ZnSe Plano-Convex Lens</div></div></div> <div><div>ALL DIMS IN</div><div>mm</div></div> <div><div>DWG NO</div><div>39532</div></div> <div><div>SHEET</div><div>1 OF 1</div></div>				<div><div> Edmund Optics®</div></div>						
RADIUS	71.260	INFINITY											
SURFACE QUALITY	40-20	40-20											
CLEAR APERTURE	90%	90%											
POWER at 10.6µm	λ/10	λ/10											
IRREGULARITY at 10.6µm	λ/20	λ/20											
BEVEL	PROTECTIVE AS NEEDED	PROTECTIVE AS NEEDED											