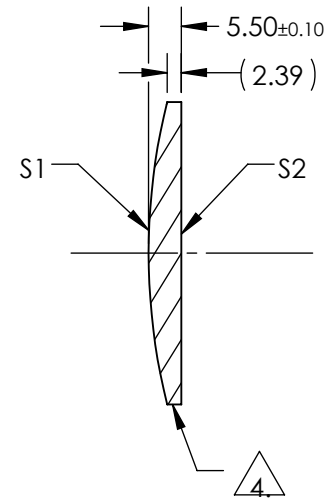
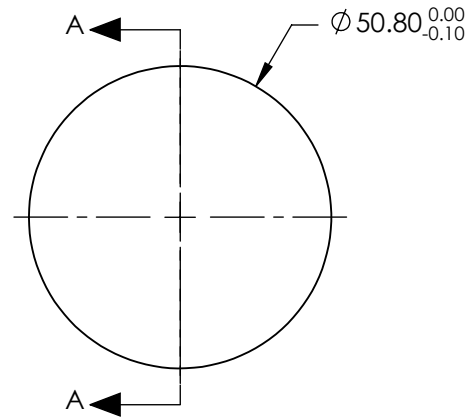


NOTES:


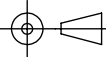
1. SUBSTRATE:
II-VI Infrared ZnSe
2. CENTERING TOLERANCE:
EDGE THICKNESS VARIATION MEASURED AT THE CLEAR APERTURE OF S1
NOT TO EXCEED 12.7 μ m
3. COATING (APPLY ACROSS COATING APERTURE)
BBAR (3000-12000nm)
S1 & S2: R(AVG) \leq 3.0% @ 3 - 12 μ m
4. FINE GROUND SURFACE
5. POWER, IRREGULARITY, AND SURFACE QUALITY SPECIFICATIONS APPLY
ACROSS CLEAR APERTURE
6. WAVELENGTH RANGE: 600 - 18000nm
7. SURFACE ROUGHNESS: <50 Å
8. ROHS: COMPLIANT



SECTION A-A

**FOR INFORMATION ONLY:
DO NOT MANUFACTURE
PARTS TO THIS DRAWING**

SPECIFICATIONS SUBJECT TO CHANGE WITHOUT NOTICE
DIMENSIONS ARE FOR REFERENCE ONLY

	S1	S2					
SHAPE	CONVEX	PLANO			 Edmund Optics®		
RADIUS	105.200	INFINITY	EFL (AT 10.6 microns)	75.00			
SURFACE QUALITY	40-20	40-20	BFL (AT 10.6 microns)	72.71			
CLEAR APERTURE	90%	90%	THIRD ANGLE PROJECTION				
POWER at 10.6 μ m	$\lambda/10$	$\lambda/10$	ALL DIMS IN	mm	TITLE	50.8mm Dia. x 75mm FL, 3-12 μ m BBAR Coated, ZnSe Plano-Convex Lens	
IRREGULARITY at 10.6 μ m	$\lambda/20$	$\lambda/20$			DWG NO		
BEVEL	PROTECTIVE AS NEEDED	PROTECTIVE AS NEEDED				11431	SHEET 1 OF 1