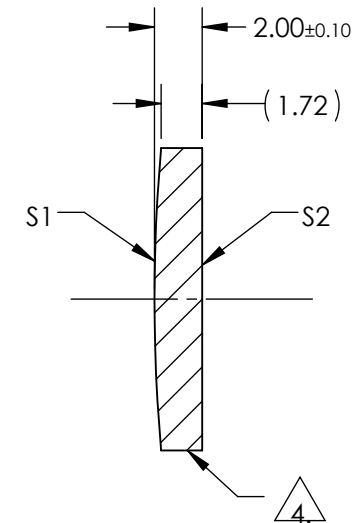
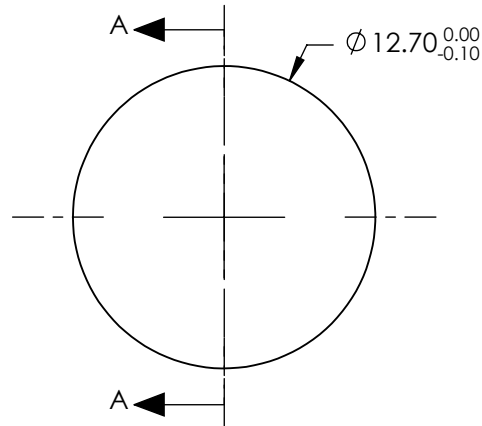


NOTES:


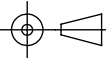
1. SUBSTRATE:  
II-VI Infrared ZnSe
2. CENTERING TOLERANCE:  
EDGE THICKNESS VARIATION MEASURED AT THE CLEAR APERTURE OF S1  
NOT TO EXCEED 50.8μm
3. COATING (APPLY ACROSS COATING APERTURE)  
BBAR (3000-12000nm)  
S1 & S2: R(AVG) ≤3.0% @ 3 - 12μm
4. FINE GROUND SURFACE
5. POWER, IRREGULARITY, AND SURFACE QUALITY SPECIFICATIONS APPLY  
ACROSS CLEAR APERTURE
6. WAVELENGTH RANGE: 3000 - 12000nm
7. SURFACE ROUGHNESS: <50 Å
8. ROHS: COMPLIANT



SECTION A-A

**FOR INFORMATION ONLY:  
DO NOT MANUFACTURE  
PARTS TO THIS DRAWING**

SPECIFICATIONS SUBJECT TO CHANGE WITHOUT NOTICE  
DIMENSIONS ARE FOR REFERENCE ONLY

	S1	S2				
SHAPE	CONVEX	PLANO				
RADIUS	71.260	INFINITY	EFL (AT 10.6 microns)	50.80	 <b>Edmund Optics®</b>	
SURFACE QUALITY	40-20	40-20	BFL (AT 10.6 microns)	49.97		
CLEAR APERTURE	90%	90%	THIRD ANGLE PROJECTION 		TITLE	12.7mm Dia. x 50.8mm FL, 3-12μm BBAR Coated, ZnSe Plano-Convex Lens
POWER at 10.6μm	λ/10	λ/10			DWG NO	11422
IRREGULARITY at 10.6μm	λ/20	λ/20	ALL DIMS IN	mm		SHEET 1 OF 1
BEVEL	PROTECTIVE AS NEEDED	PROTECTIVE AS NEEDED				