

## II-VI Infrared ZnSe

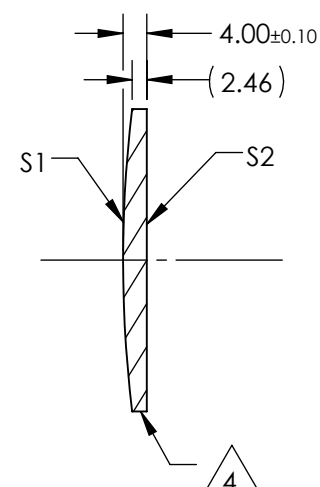
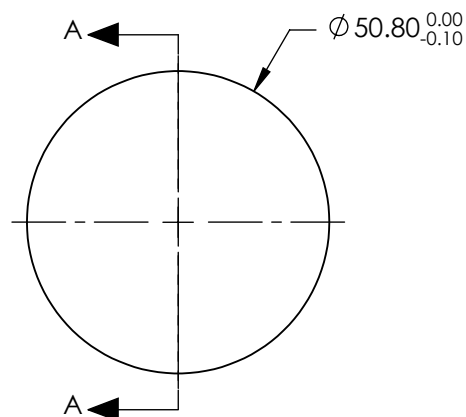
- BBAR (8000-12000nm)

S1 & S2: R(AVG) <0.5% @ 8 - 12μm

5. POWER, IRREGULARITY, AND SURFACE QUALITY SPECIFICATIONS APPLY ACROSS CLEAR APERTURE

7. SURFACE ROUGHNESS:  $<50 \text{ \AA}$

8. ROHS: COMPLIANT



SECTION A-A

**FOR INFORMATION ONLY:  
DO NOT MANUFACTURE  
PARTS TO THIS DRAWING**

	S1	S2
SHAPE	CONVEX	PLANO
RADIUS	210.400	INFINITY
SURFACE QUALITY	40-20	40-20
CLEAR APERTURE	90%	90%
POWER at 10.6μm	λ/10	λ/10
IRREGULARITY at 10.6μm	λ/20	λ/20
BEVEL	PROTECTIVE AS NEEDED	PROTECTIVE AS NEEDED

EFL (AT 10.6 microns)	150.00
BFL (AT 10.6 microns)	148.34

THIRD ANGLE PROJECTION

ALL DIMS IN	mm
-------------	----

 Edmund Optics®

TITLE

50.8mm Dia. x 150mm FL, 8-12 $\mu$ m BBAR  
Coated, ZnSe Plano-Convex Lens

DWG NO

11411

SHEET  
1 OF 1