

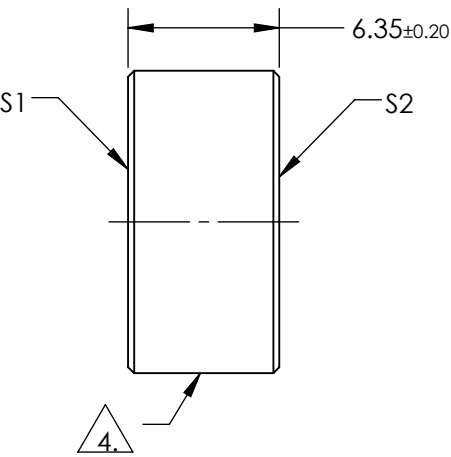
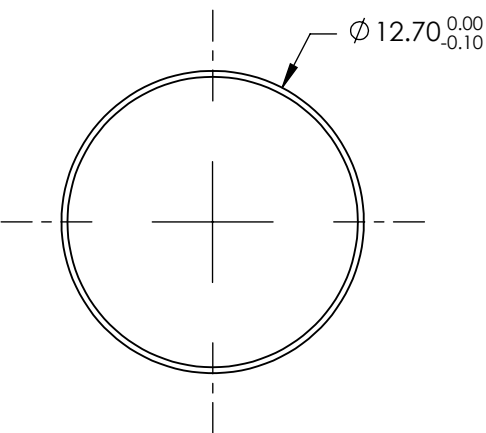
NOTES:

- 1. SUBSTRATE:
FUSED SILICA
- 2. S2 TO BE PARALLEL TO S1 TO WITHIN <3 ARCMINS
- 3. COATING (APPLY ACROSS COATING APERTURE)
S1 & S2: R(ABS) < 0.25% @ 1030nm @ 0° AOI

DAMAGE THRESHOLD
PULSED: 15J/cm² @ 20ns, 20Hz @ 1030nm

4. FINE GROUND SURFACE


- 5. CLEAR APERTURE AND COATING APERTURE ARE CENTERED ON SURFACE
- 6. SURFACE QUALITY SPECIFICATIONS APPLY ACROSS CLEAR APERTURE
- 7. ROHS COMPLIANT



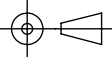
**FOR INFORMATION ONLY:
DO NOT MANUFACTURE
PARTS TO THIS DRAWING**

SPECIFICATIONS SUBJECT TO CHANGE WITHOUT NOTICE
DIMENSIONS ARE FOR REFERENCE ONLY

	S1	S2
SHAPE	PLANO	PLANO
SURFACE QUALITY	10-5	10-5
SURFACE FLATNESS	$\lambda/10$	$\lambda/10$
MIN CLEAR APERTURE	$\varnothing 11.43$	$\varnothing 11.43$
BEVEL	PROTECTIVE AS NEEDED	PROTECTIVE AS NEEDED

**Edmund Optics®**

THIRD ANGLE
PROJECTION



TITLE

Ø12.7mm x 6.35mm 1030nm FS LASER WINDOW

ALL DIMS IN

mm

DWG NO

39717

SHEET

1 OF 1