

NOTES:

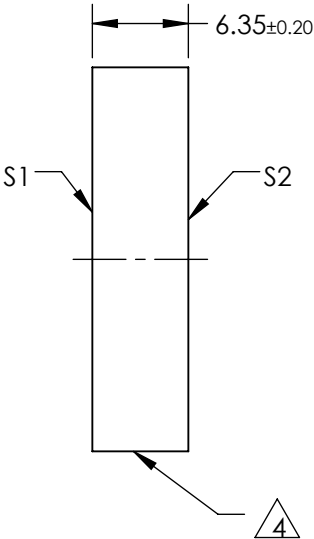
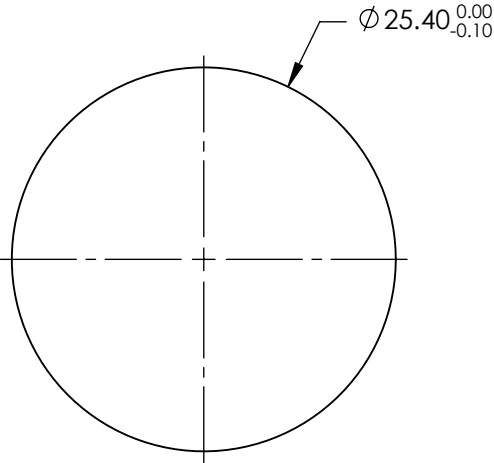
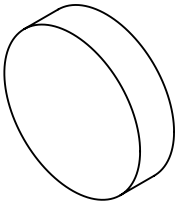
- 1. SUBSTRATE: N-BK7
- 2. SURFACE S2 TO BE PARALLEL TO SURFACE S1 TO WITHIN <3 ARCMIN
- 3. COATING (APPLY ACROSS COATING APERTURE)

S1: R(ABS) >99% @ 850nm @ 0° AOI

S2: NONE

 FINE GRIND SURFACE

- 5. ROHS: COMPLIANT



FOR INFORMATION ONLY:
DO NOT MANUFACTURE
PARTS TO THIS DRAWING

SPECIFICATIONS SUBJECT TO CHANGE WITHOUT NOTICE
DIMENSIONS ARE FOR REFERENCE ONLY

| | S1 | S2 |
|--------------------|----------------------|----------------------|
| SHAPE | PLANO | PLANO |
| SURFACE QUALITY | 20-10 | COMMERCIAL POLISH |
| SURFACE FLATNESS | $\lambda/10$ | N/A |
| MIN CLEAR APERTURE | $\varnothing 22.86$ | N/A |
| BEVEL | PROTECTIVE AS NEEDED | PROTECTIVE AS NEEDED |



ALL DIMS IN mm

 **Edmund Optics®**

TITLE 25.4mm DIA. 850nm 0°, LOW COST LASER LINE MIRROR

DWG NO 11097

SHEET 1 OF 1