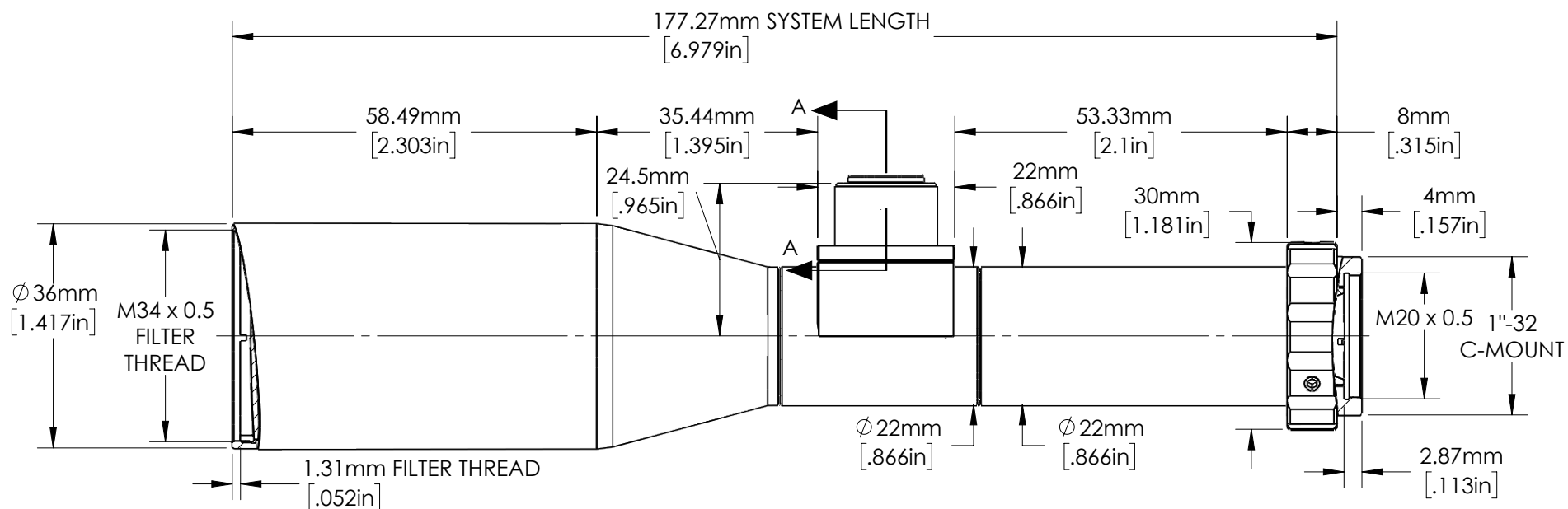
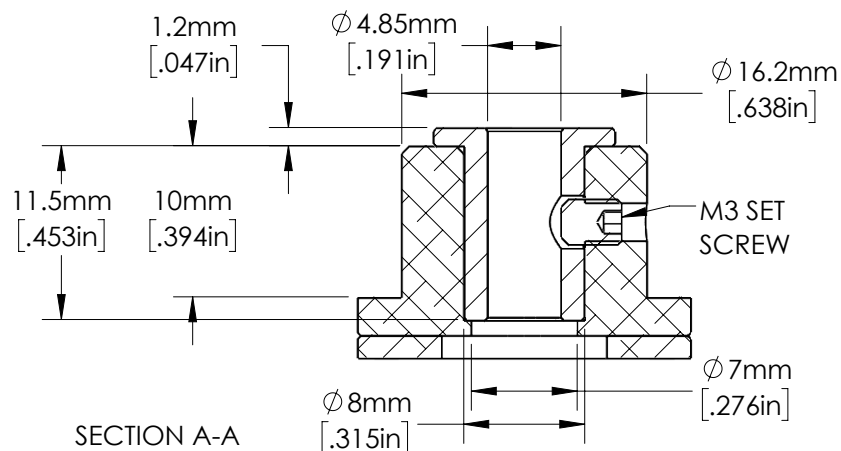


**FOR INFORMATION ONLY:
DO NOT MANUFACTURE
PARTS TO THIS DRAWING**



SPECIFICATIONS SUBJECT TO CHANGE WITHOUT NOTICE
DIMENSIONS ARE FOR REFERENCE ONLY
DIMENSIONS ARE IN mm [INCHES]

FOV RANGE ON 2/3" SENSOR	8.8mm
FOV RANGE ON 1/2" SENSOR	6.4mm
FOV RANGE ON 1/3" SENSOR	4.8mm
WORKING DISTANCE	300±2mm
TELECENTRICITY	<0.07°
DISTORTION	<0.02%
APERTURE (f/#)	f14.3



Edmund Optics®

TITLE	1X, 300mm WD, In-Line Compact Telecentric Lens		
DWG NO	33114		SHEET 1 OF 1

