

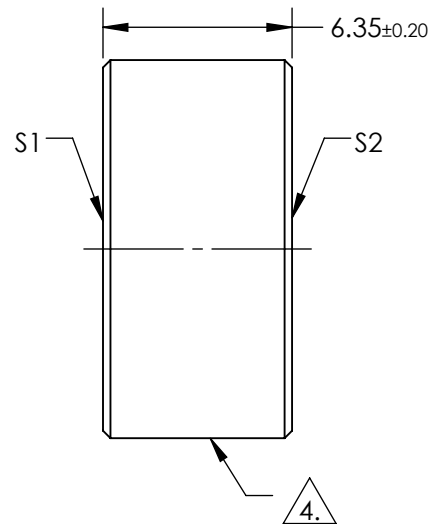
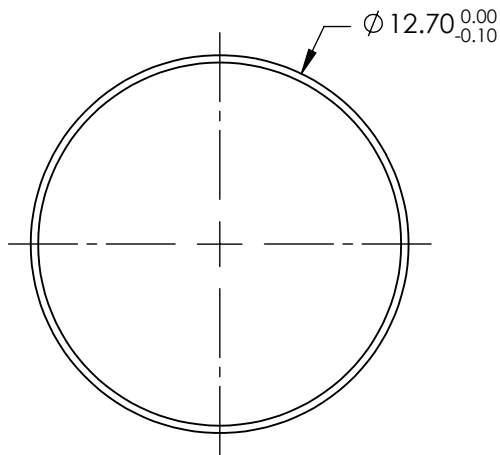
- NOTES:
- 1. SUBSTRATE:
FUSED SILICA
 - 2. SURFACE S2 TO BE PARALLEL TO SURFACE S1 TO WITHIN <3 ARCMIN
 - 3. COATING (APPLY ACROSS COATING APERTURE):

S1:
Rs > 99.9% @ 1900 - 2200nm @ 45° AOI
Rp > 99.6% @ 1940 - 2100nm @ 45° AOI

DAMAGE THRESHOLD, PULSED:
>10J/cm²@ 10ns, 10Hz, 2000nm


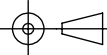
S2: COMPENSATING COATING

4. FINE GRIND SURFACE
5. RoHS: COMPLIANT



SPECIFICATIONS SUBJECT TO CHANGE WITHOUT NOTICE
DIMENSIONS ARE FOR REFERENCE ONLY

	S1	S2
SHAPE	PLANO	PLANO
CLEAR APERTURE	Ø11.70	N/A
SURFACE QUALITY	40-20	N/A
SURFACE FLATNESS	λ/7	N/A
BEVEL	PROTECTIVE AS NEEDED	PROTECTIVE AS NEEDED

 Edmund Optics®			
THIRD ANGLE PROJECTION 		TITLE	12.7mm 2µm MIRROR 45 DEG
ALL DIMS IN	mm	DWG NO	37501
			SHEET 1 OF 1