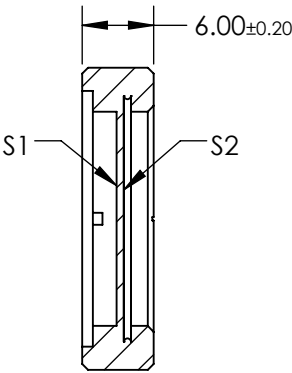
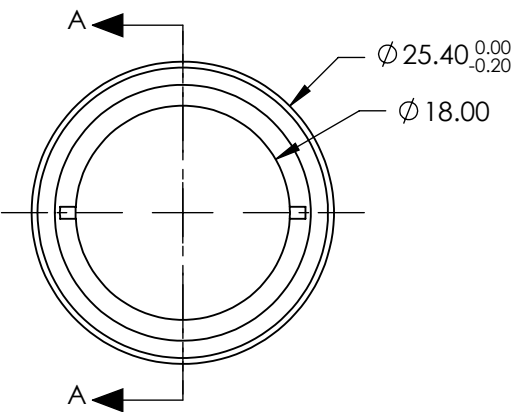


NOTES:

- 1. SUBSTRATE:
Crystalline Quartz
- 2. COATING (APPLY ACROSS COATING APERTURE):
S1 & S2: R(AVG) <0.2%

DAMAGE THRESHOLD,
PULSED: >20 J/cm², 10ns @ 10Hz @ 1064nm
- 3. SURFACE S1 TO BE PARALLEL TO SURFACE S2 TO WITHIN <3 ARCSEC
- 4. RETARDANCE: $\lambda/2 \pm \lambda/300$ @ 20°C
RETARDANCE ORDER: 0
- 5. DESIGN WAVELENGTH: 1030nm
- 6. TRANSMITTED WAVEFRONT: < $\lambda/10$ @ 632.8nm
- 7. ROHS: COMPLIANT

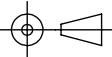


SECTION A-A

**FOR INFORMATION ONLY:
DO NOT MANUFACTURE
PARTS TO THIS DRAWING**

SPECIFICATIONS SUBJECT TO CHANGE WITHOUT NOTICE
DIMENSIONS ARE FOR REFERENCE ONLY

EO[®] Edmund Optics[®]

| | S1 | S2 | THIRD ANGLE PROJECTION  | | TITLE | 25.4mm Dia., 1030nm, $\lambda/2$ High Energy Waveplate | |
|-----------------|--------------|--------------|--|----|--------|--|--------------|
| SURFACE QUALITY | 20-10 | 20-10 | ALL DIMS IN | mm | DWG NO | 39177 | SHEET 1 OF 1 |
| CLEAR APERTURE | $\phi 18.00$ | $\phi 18.00$ | | | | | |