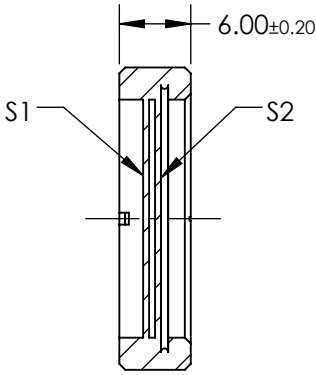
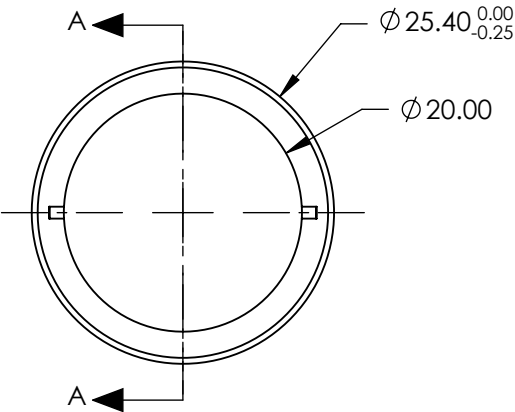


NOTES:

- 1. SUBSTRATE:
Crystal Quartz and MgF2
- 2. COATING (APPLY ACROSS COATING APERTURE):
S1 & S2: R(AVG) <0.75% @ 340 - 560nm

DAMAGE THRESHOLD,
PULSED: >5 J/cm², 10ns @ 10Hz @ 1064nm
- 3. SURFACE S1 TO BE PARALLEL TO SURFACE S2 TO WITHIN <10 ARCSEC
- 4. RETARDANCE: $\lambda/2 \pm \lambda/100$ @ 20°C
- 5. DESIGN WAVELENGTH: 340 - 560 nm
- 6. TRANSMITTED WAVEFRONT: $<\lambda/4$ @ 632nm
- 7. CONSTRUCTION: Crystalline
- 8. ROHS: COMPLIANT

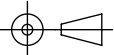


SECTION A-A

**FOR INFORMATION ONLY:
DO NOT MANUFACTURE
PARTS TO THIS DRAWING**

SPECIFICATIONS SUBJECT TO CHANGE WITHOUT NOTICE
DIMENSIONS ARE FOR REFERENCE ONLY

EO® **Edmund Optics®**

	S1	S2	THIRD ANGLE PROJECTION 		TITLE	25.4mm Dia, 340 - 560nm, $\lambda/2$ Achromatic Waveplate	
SURFACE QUALITY	40-20	40-20	ALL DIMS IN	mm	DWG NO	39027	SHEET 1 OF 1
CLEAR APERTURE	>Ø20	>Ø20					