

NOTES:

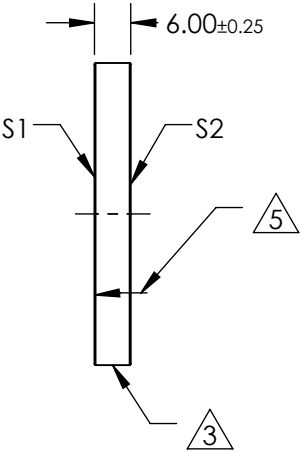
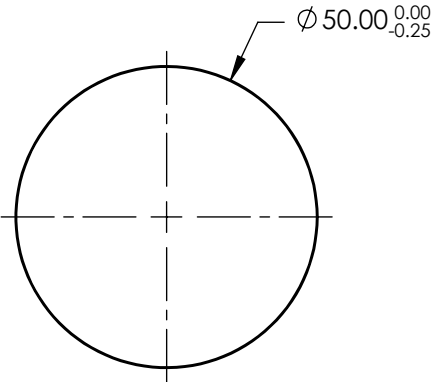
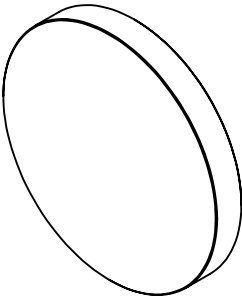
- 1. SUBSTRATE  
Fused Silica
- 2. COATING (APPLY ACROSS CLEAR APERTURE)  
S1: P-POLARIZATION TRANSMISSION EFFICIENCY: >98%  
EXTINCTION RATIO: 10000:1  
  
Damage Threshold, Pulsed:  
2 J/cm2 @ 532nm, 10ns, S or P Polarization

3 FINE GROUND SURFACE

- 4. POWER, IRREGULARITY, SURFACE QUALITY, AND COATING SPECIFICATIONS APPLY ACROSS CLEAR APERTURE

5 APPLY ARROW ON EDGE WITH PENCIL OR PERMANENT INK TOWARDS S1

- 6. DESIGN WAVELENGTH: 633nm
- 7. RoHS: COMPLIANT




**FOR INFORMATION ONLY:**  
**DO NOT MANUFACTURE**  
**PARTS TO THIS DRAWING**

SPECIFICATIONS SUBJECT TO CHANGE WITHOUT NOTICE  
DIMENSIONS ARE FOR REFERENCE ONLY

|                        | S1                   | S2                   |
|------------------------|----------------------|----------------------|
| TRANSMITTED WAVEFRONT  | $\lambda/4$ @ 633nm  | $\lambda/4$ @ 633nm  |
| ANGLE OF INCIDENCE (°) | 45 ±2                | 45 ±2                |
| SHAPE                  | PLANO                | PLANO                |
| SURFACE QUALITY        | 40-20                | 40-20                |
| CLEAR APERTURE         | Ø45.00               | Ø45.00               |
| BEVEL                  | PROTECTIVE AS NEEDED | PROTECTIVE AS NEEDED |

THIRD ANGLE PROJECTION

ALL DIMS IN mm

|                                                                                                      |                                                       |              |  |
|------------------------------------------------------------------------------------------------------|-------------------------------------------------------|--------------|--|
|  Edmund Optics® |                                                       |              |  |
| TITLE                                                                                                | 633nm, 50mm DIAMETER, THIN-FILM LASER LINE POLARIZERS |              |  |
| DWG NO                                                                                               | 86714                                                 | SHEET 1 OF 1 |  |