

NOTES:

- 1. SUBSTRATE  
Fused Silica
- 2. COATING (APPLY ACROSS CLEAR APERTURE)  
S1: P-POLARIZATION TRANSMISSION EFFICIENCY: >98%  
EXTINCTION RATIO: 10000:1  
  
Damage Threshold, Pulsed:  
2 J/cm2 @ 532nm, 10ns, S or P Polarization

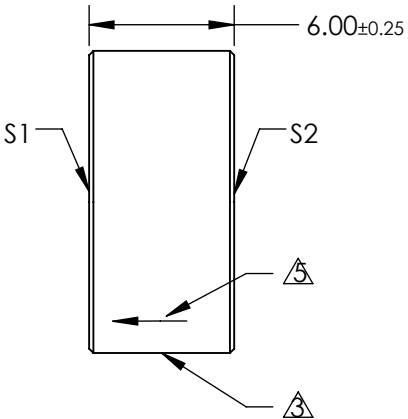
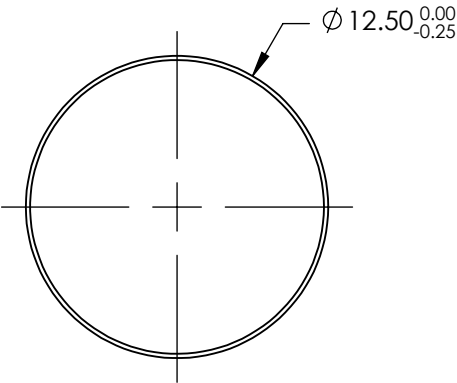
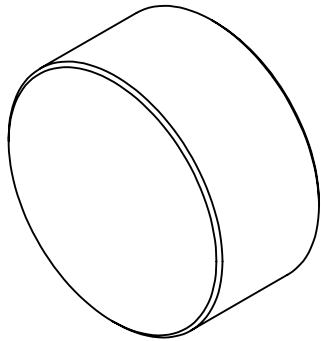
3 FINE GROUND SURFACE

- 4. POWER, IRREGULARITY, SURFACE QUALITY, AND COATING  
SPECIFICATIONS APPLY ACROSS CLEAR APERTURE

5 APPLY ARROW ON EDGE WITH PENCIL OR PERMANENT INK TOWARDS S1

- 6. DESIGN WAVELENGTH: 355nm

- 7. RoHS: COMPLIANT



**FOR INFORMATION ONLY:**  
**DO NOT MANUFACTURE**  
**PARTS TO THIS DRAWING**

SPECIFICATIONS SUBJECT TO CHANGE WITHOUT NOTICE  
DIMENSIONS ARE FOR REFERENCE ONLY

	S1	S2
TRANSMITTED WAVEFRONT	$\lambda/4$ @ 633nm	$\lambda/4$ @ 633nm
ANGLE OF INCIDENCE (°)	45 ±2	45 ±2
SHAPE	PLANO	PLANO
SURFACE QUALITY	40-20	40-20
CLEAR APERTURE	Ø11.25	Ø11.25
BEVEL	PROTECTIVE AS NEEDED	PROTECTIVE AS NEEDED



ALL DIMS IN

mm



Edmund Optics

TITLE

355nm, 12.5mm DIAMETER, THIN-FILM LASER LINE  
POLARIZERS

DWG NO

86706

SHEET  
1 OF 1