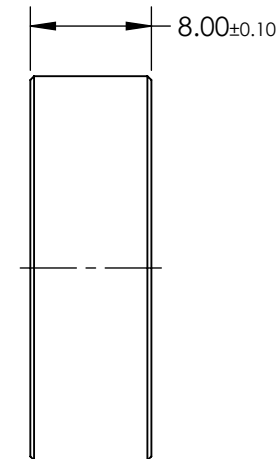
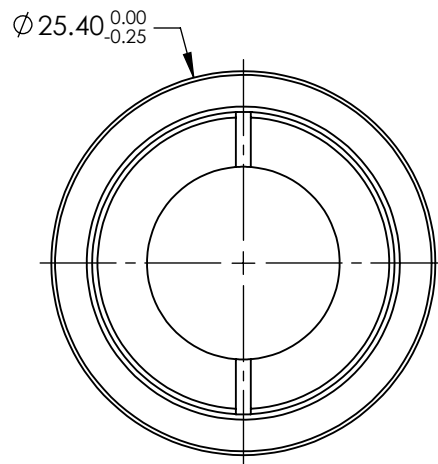
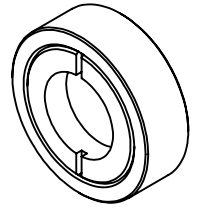


NOTES:

1. SUBSTRATE:  
CRYSTAL QUARTZ AND MgF2
2. COATING SPECIFICATION (APPLY ACROSS COATING APERTURE)  
  
S1 & S2: R(AVG) < 0.6% @ 700 - 1000nm  
  
DAMAGE THRESHOLD, CW: 500 kW/cm<sup>2</sup>  
(PULSED): 2 J/cm<sup>2</sup> FOR 8ns @ 1064nm
3. CONSTRUCTION: CRYSTALLINE
4. ROHS: COMPLIANT



**FOR INFORMATION ONLY:  
DO NOT MANUFACTURE  
PARTS TO THIS DRAWING**

SPECIFICATIONS SUBJECT TO CHANGE WITHOUT NOTICE  
DIMENSIONS ARE FOR REFERENCE ONLY

REV. A	VALUE
WAVELENGTH RANGE (nm)	700 - 1000
SURFACE QUALITY	20 - 10
CLEAR APERTURE (mm)	Ø11.50
RETARDANCE	λ/4
RETARDANCE TOLERANCE	≤ λ/100



ALL DIMS IN mm

**EO**® Edmund Optics®

TITLE

25.4mm Dia, 700-1000nm, λ/4 Wave  
Achromatic Waveplate

DWG NO

46560

SHEET  
1 OF 1