

NOTES:

1. SUBSTRATE  
FUSED SILICA
2. ROHS COMPLIANT
3. CENTERING TOLERANCE (AT 587.6nm):  
BEAM DEVIATION (HALF ANGLE): <1 ARCMIN
4. COATING (APPLY ACROSS COATING APERTURE):

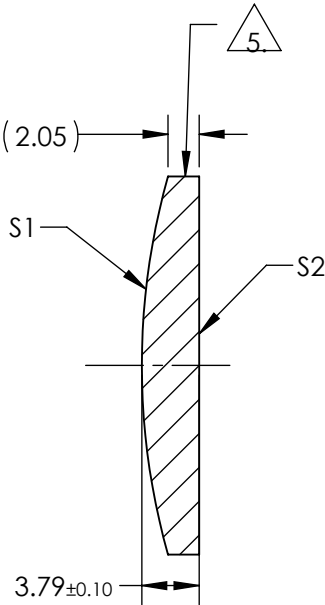
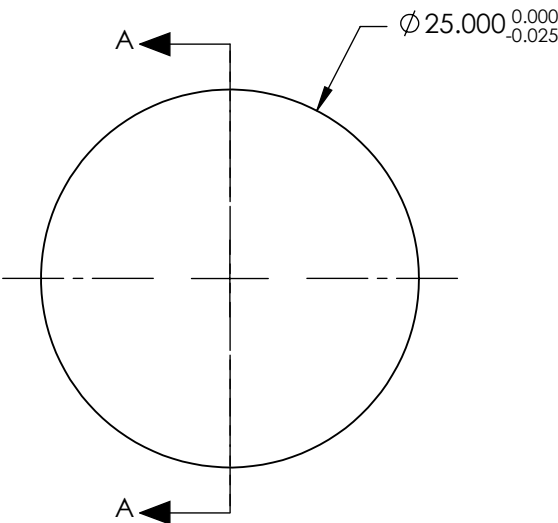
S1 & S2: NONE  
R(ABS) <0.25% @ 266nm @ 0° AOI

DAMAGE THRESHOLD,  
PULSED: 3 J/cm² @ 266nm, 20ns, 20Hz

5. FINE GRIND SURFACE

6. POWER, IRREGULARITY, AND SURFACE QUALITY SPECIFICATIONS  
APPLY ACROSS CLEAR APERTURE
7. FOCAL LENGTH (EFL): 100.00 mm±1%  
BACK FOCAL LENGTH (BFL): 97.4 mm

**FOR INFORMATION ONLY:  
DO NOT MANUFACTURE  
PARTS TO THIS DRAWING**



SECTION A-A

SPECIFICATIONS SUBJECT TO CHANGE WITHOUT NOTICE  
DIMENSIONS ARE FOR REFERENCE ONLY

	S1	S2
SHAPE	CONVEX	PLANO
RADIUS	45.85	INFINITY
SURFACE ACCURACY (P-V)	$\lambda/20$	$\lambda/20$
SURFACE QUALITY	20-10	20-10
MIN CLEAR APERTURE	Ø22.50	Ø22.50
MIN COATING APERTURE	N/A	N/A
BEVEL	PROTECTIVE AS NEEDED	PROTECTIVE AS NEEDED



ALL DIMS IN

mm



Edmund Optics®

TITLE

25mm Dia. x 100mm FL, 266nm Laser V-Coat,  
 $\lambda/20$  PCX Lens

DWG NO

38763

SHEET  
1 OF 1