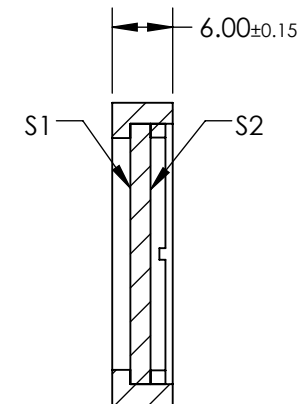
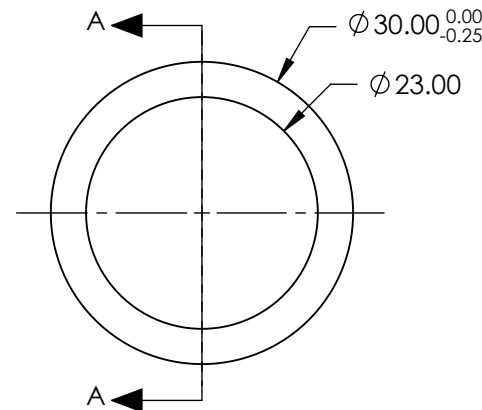
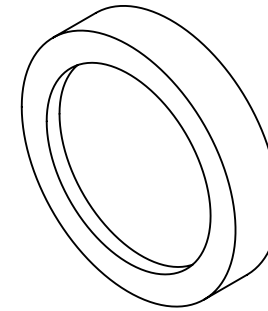
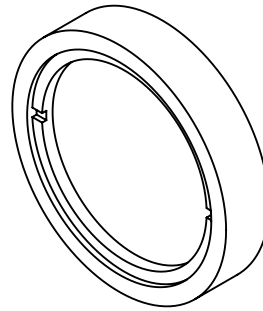


NOTES:

1. SUBSTRATE:
Crystal Quartz and MgF2
2. COATING (APPLY ACROSS CLEAR APERTURE)
S1 & S2: R(AVG) <0.7% @ 610 - 850nm

DAMAGE THRESHOLD,
PULSED: 2 J/cm² @ 8ns @ 1064nm
CW: 500 kW/cm² @ 1064nm
3. SURFACE S1 TO BE PARALLEL TO SURFACE S2 TO WITHIN <1 ARCMIN
4. RETARDANCE: $\lambda/4 \pm \leq \lambda/100$
5. TRANSMITTED WAVEFRONT: $\lambda/4$ @ 633nm
6. WAVELENGTH RANGE: 610 - 850 nm
7. TEMPERATURE COEFFICIENT: <1/500 $\lambda/^{\circ}\text{C}$
8. RoHS COMPLIANT

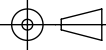


SECTION A-A

**FOR INFORMATION ONLY:
DO NOT MANUFACTURE
PARTS TO THIS DRAWING**

SPECIFICATIONS SUBJECT TO CHANGE WITHOUT NOTICE
DIMENSIONS ARE FOR REFERENCE ONLY

EO® **Edmund Optics®**

	S1	S2	THIRD ANGLE PROJECTION 		TITLE	30mm Dia, 610 - 850nm, $\lambda/4$ Achromatic Waveplate	
CLEAR APERTURE	Ø23.00	Ø23.00	ALL DIMS IN	mm	DWG NO	65919	SHEET 1 OF 1
SURFACE QUALITY	20-10	20-10					