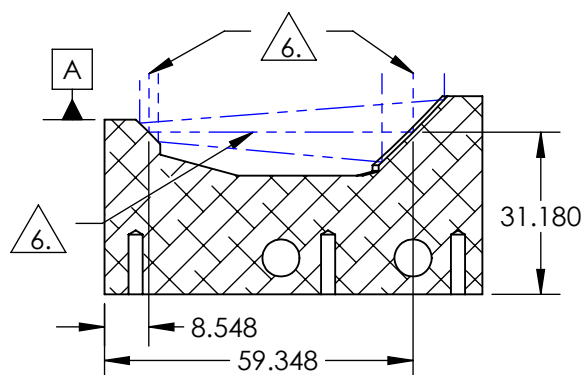
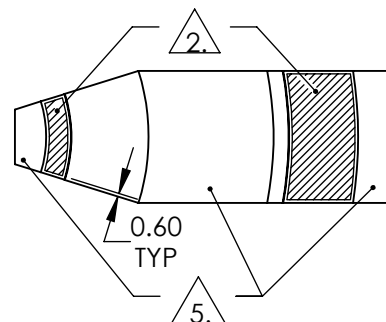
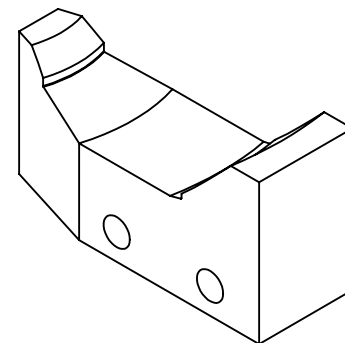
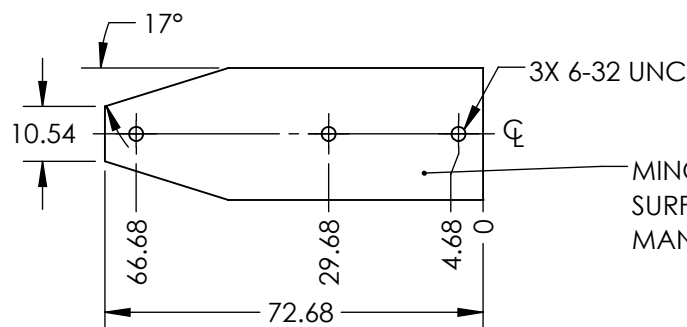
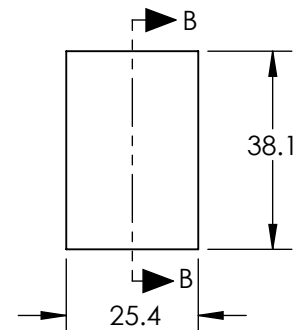
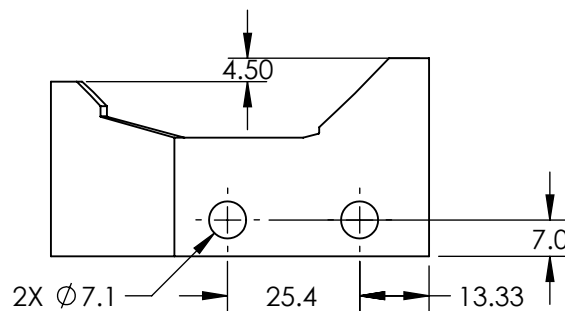


NOTES:

1. SUBSTRATE: ALUMINUM 6061-T6
2. COATING  
BARE GOLD
- R(AVG) > 94% @ 700 - 800nm  
R(AVG) > 97% @ 800 - 2000nm  
R(AVG) > 98% @ 2 - 12μm
3. SURFACE ROUGHNESS: <50 Å RMS
4. SYSTEM SHALL BE ALIGNED TO DATUM **A** WITH  
REFLECTED WAVEFRONT ERROR OF  $\leq 1/10$  WAVE  
AT 632.8 nm FOR  $\varnothing 1$ mm INPUT BEAM.
5. INTEGRATED ALIGNMENT FLATS
6. OPTICAL CENTER LINE
7. RoHS COMPLIANT



SECTION B-B  
OPTICAL CENTER LINE



MINOR SCRATCHES ON THE NON-OPTICAL  
SURFACE MIGHT BE PRESENT DUE TO THE  
MANUFACTURING PROCESS.

**FOR INFORMATION ONLY:  
DO NOT MANUFACTURE  
PARTS TO THIS DRAWING**

SPECIFICATIONS SUBJECT TO  
CHANGE WITHOUT NOTICE  
DIMENSIONS ARE FOR  
REFERENCE ONLY

**EO**® **Edmund Optics**®

REV. A	S1
SHAPE	MONOLITHIC
BEVEL	PROTECTIVE AS NEEDED

THIRD ANGLE PROJECTION	
ALL DIMS IN	mm

TITLE	3X, Bare Gold Canopus™ Reflective Beam Expander		
DWG NO	37190	SHEET	1 OF 1