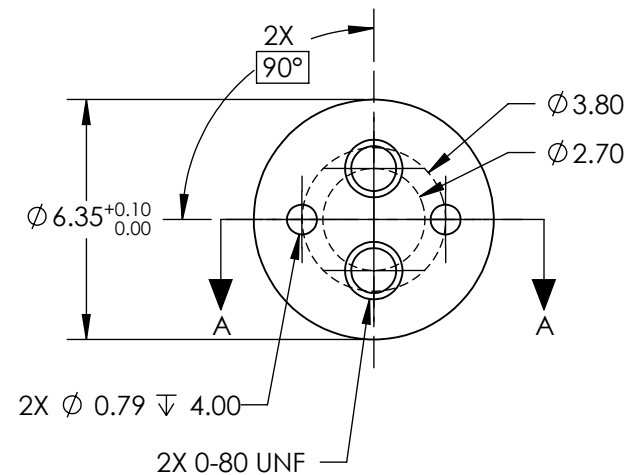
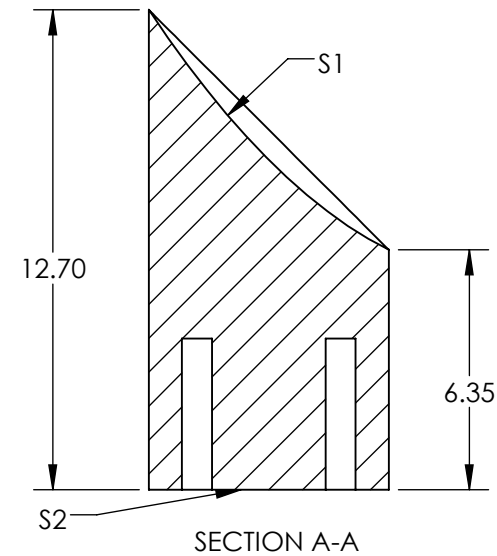
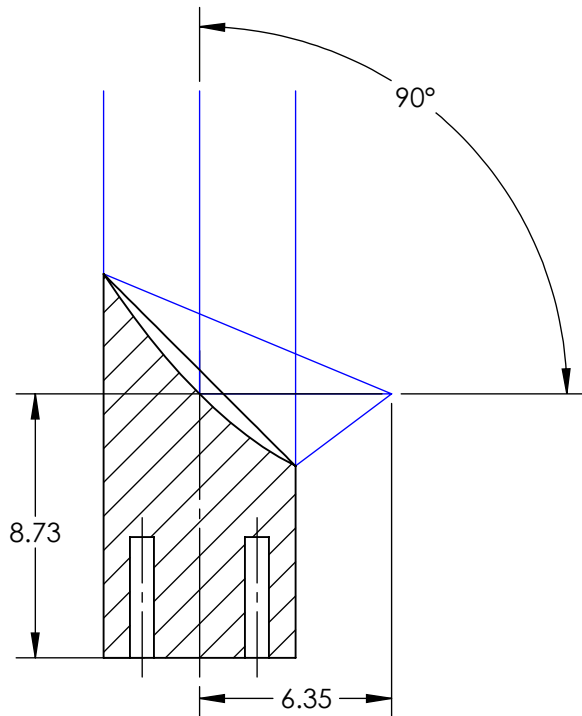


NOTES:

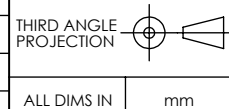
- SUBSTRATE MATERIAL:  
ALUMINUM
- FINISH (EXCEPT SURFACE S1 & S2):  
BLACK ANODIZED
- COATING (APPLY ACROSS CLEAR APERTURE)  
S1: PROTECTED ALUMINUM  
R(AVG) >94% @ 0.7-0.8 $\mu$ m  
R(AVG) >97% @ 0.8-2.0 $\mu$ m  
R(AVG) >98% @ 2-12 $\mu$ m  
  
SURFACE ROUGHNESS: <50 Å RMS
- FOCAL LENGTH TOLERANCE:  $\pm 1\%$
- ROHS COMPLIANT

**FOR INFORMATION ONLY:  
DO NOT MANUFACTURE  
PARTS TO THIS DRAWING**



SPECIFICATIONS SUBJECT TO CHANGE WITHOUT NOTICE  
DIMENSIONS ARE FOR REFERENCE ONLY

|                                 |                      |
|---------------------------------|----------------------|
| REV. A                          | S1                   |
| SHAPE                           | PARABOLIC            |
| SURFACE FIGURE AT 632.8nm (RMS) | $\lambda/8$          |
| CLEAR APERTURE                  | 90%                  |
| BEVEL                           | PROTECTIVE AS NEEDED |



**Edmund Optics®**

TITLE  $\phi 6.35 \times 6.35\text{mm EFL, PROTECTED ALUMINUM}$   
50Å OFF-AXIS PARABOLIC MIRROR

DWG NO 37282 SHEET 1 OF 1