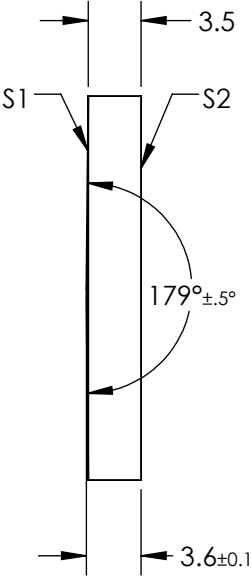
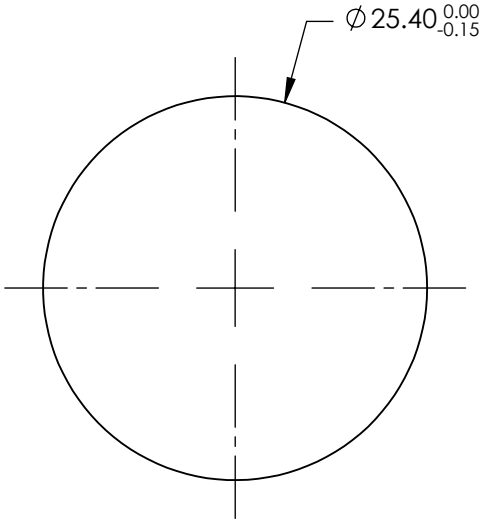


NOTES:

- 1. SUBSTRATE MATERIAL:  
FUSED SILICA
- 2. COATING (APPLY ACROSS CLEAR APERTURE)  
  
S1& S2: NIR I  
R(AVG) ≤ 0.5% FROM 600-1050nm @ 0° AOI
- 3. RoHS COMPLIANT



**FOR INFORMATION ONLY:**  
**DO NOT MANUFACTURE**  
**PARTS TO THIS DRAWING**

SPECIFICATIONS SUBJECT TO CHANGE WITHOUT NOTICE  
DIMENSIONS ARE FOR REFERENCE ONLY

REV. A	S1	S2
SHAPE	CONICAL	PLANO
SURFACE ACCURACY	λ/4	λ/4
SURFACE QUALITY	40-20	40-20
CLEAR APERTURE	>90	>90
BEVEL	PROTECTIVE AS NEEDED	PROTECTIVE AS NEEDED

THIRD ANGLE PROJECTION

ALL DIMS IN

mm

Edmund Optics®

TITLE

179° APEX ANGLE, Ø25.4mm, NIR I AXICON

DWG NO

36677

SHEET

1 OF 1