

NOTES:

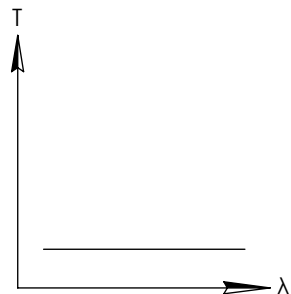
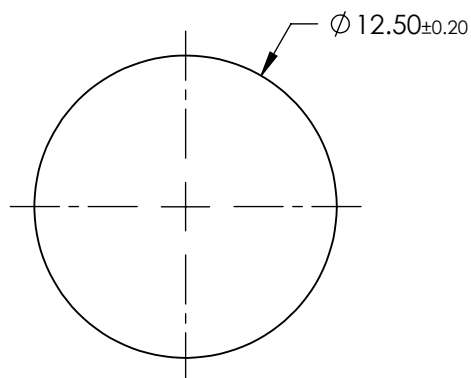
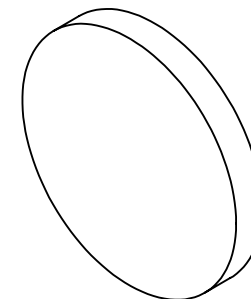
1. SUBSTRATE: FUSED SILICA
2. SURFACE S2 TO BE PARALLEL WITH SURFACE S1 TO WITHIN < 10 ARCMINS
3. COATING(APPLY ACROSS CLEAR APERTURE)  
METALLIC BASED ND, OPTICAL DENSITY (abs) =  $3.5 \pm 10\%$  FROM 700 - 1100nm

4. FINE GROUND SURFACE

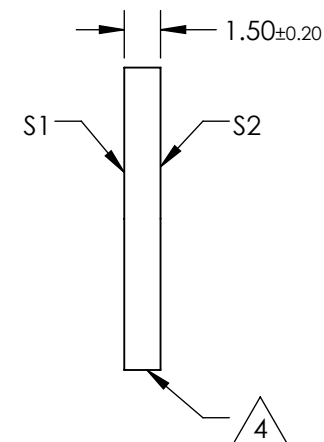
5. POWER, IRREGULARITY, AND SURFACE QUALITY SPECIFICATIONS APPLY ACROSS CLEAR APERTURE

6. ROHS COMPLIANT

**FOR INFORMATION ONLY:  
DO NOT MANUFACTURE  
PARTS TO THIS DRAWING**



IR NEUTRAL DENSITY FILTER



SPECIFICATIONS SUBJECT TO CHANGE WITHOUT NOTICE  
DIMENSIONS ARE FOR REFERENCE ONLY

|                  | S1                   | S2                   |
|------------------|----------------------|----------------------|
| SHAPE            | PLANO                | PLANO                |
| SURFACE FLATNESS | 3 - 5λ               | 3 - 5λ               |
| SURFACE QUALITY  | 40-20                | 40-20                |
| CLEAR APERTURE   | Ø10.0                | Ø10.0                |
| BEVEL            | PROTECTIVE AS NEEDED | PROTECTIVE AS NEEDED |



ALL DIMS IN

mm



**Edmund Optics®**

TITLE

FILTER FS NIR ND REF Ø12.5mm 3.5 OD

DWG NO

36262

SHEET  
1 OF 1