

NOTES:

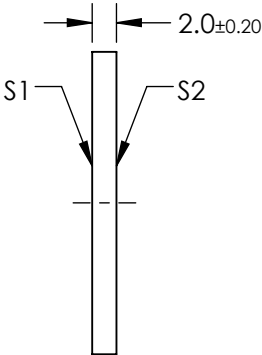
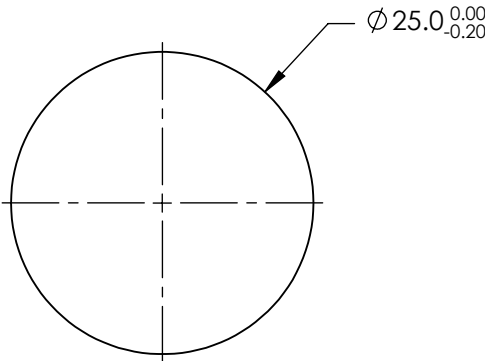
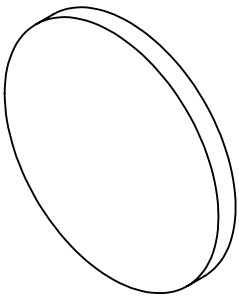
- 1. SUBSTRATE: SODA LIME FLOAT GLASS
- 2. COATING (APPLY ACROSS COATING APERTURE)

S1 & S2:
EXTINCTION RATIO: $T_p/T_s > 100000:1$ FROM 660 - 750nm
TRANSMISSION: $T_p > 84\%$ FROM 660 - 750nm

EXTINCTION RATIO: $T_p/T_s > 10000:1$ FROM 600 - 850nm
TRANSMISSION: $T_p > 84\%$ FROM 600 - 850nm

EXTINCTION RATIO: $T_p/T_s > 1000:1$ FROM 600 - 1000nm
TRANSMISSION: $T_p > 84\%$ FROM 600 - 1000nm

- 3. BEAM DEVIATION: < 1 arcmin
- 4. WAVEFRONT DISTORTION: $< \frac{1}{4}$ WAVE @ 633nm
- 5. RoHS COMPLIANT



**FOR INFORMATION ONLY:
DO NOT MANUFACTURE
PARTS TO THIS DRAWING**

SPECIFICATIONS SUBJECT TO CHANGE WITHOUT NOTICE
DIMENSIONS ARE FOR REFERENCE ONLY

Edmund Optics®

| | | | | |
|--|----|--------|--|--------------|
| THIRD ANGLE PROJECTION  | | TITLE | Ø25mm, HIGH CONTRAST VIS-NIR POLARIZER | |
| ALL DIMS IN | mm | DWG NO | 36653 | SHEET 1 OF 1 |