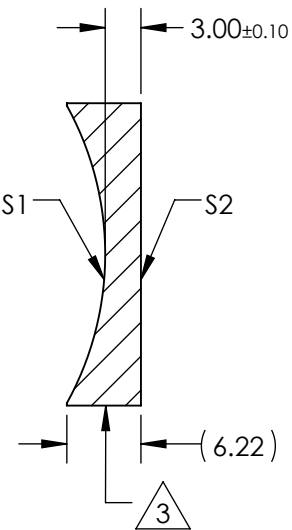
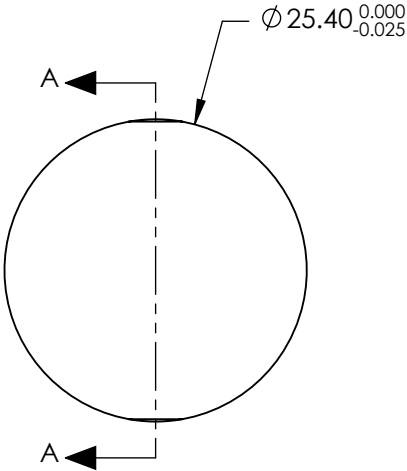


NOTES:

- 1. SUBSTRATE MATERIAL:  
N-BK7
- 2. COATING (APPLY ACROSS CLEAR APERTURE)  
S1 & S2: NONE


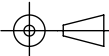
3. FINE GROUND SURFACE

- 4. POWER, IRREGULARITY, AND SURFACE QUALITY  
SPECIFICAIONS APPLY ACROSS CLEAR APERTURE
- 5. FOCAL LENGTH TOLERANCE:  $\pm 1\%$
- 6. PLANO AXIS WEDGE TOLERANCE:  $< 5$  ARCMIN  
POWER AXIS WEDGE TOLERANCE:  $< 5$  ARCMIN
- 7. RoHS COMPLIANT



SECTION A-A

**FOR INFORMATION ONLY:  
DO NOT MANUFACTURE  
PARTS TO THIS DRAWING**

REV. A	S1	S2	SPECIFICATIONS SUBJECT TO CHANGE WITHOUT NOTICE DIMENSIONS ARE FOR REFERENCE ONLY				
SHAPE	CONCAVE	PLANO	EFL	(-50)mm	 Edmund Optics®		
RADIUS	25.84	∞	BFL	(-51.978)mm			
SURFACE QUALITY	40 - 20	40 - 20			TITLE	Lens PCV Cylinder 25.40mm Dia. x -50.00 EFL	
CLEAR APERTURE	Ø22.86	Ø22.86			DWG NO	34622	SHEET 1 OF 1
COATING APERTURE	N/A	N/A	ALL DIMS IN	mm			
POWER AT 632.8nm	1.5 WAVES PV	1.5 WAVES PV					
IRREGULARITY AT 632.8nm	0.25 WAVE PV	0.25 WAVE PV					
BEVEL	PROTECTIVE AS NEEDED	PROTECTIVE AS NEEDED					