

NOTES:

- 1. SUBSTRATE
SAPPHIRE (Al₂O₃)
- 2. SURFACE S2 TO BE PARALLEL WITH SURFACE S1 TO WITHIN ≤3.5 ARCMIN
- 3. COATING (APPLY ACROSS CLEAR APERTURE)

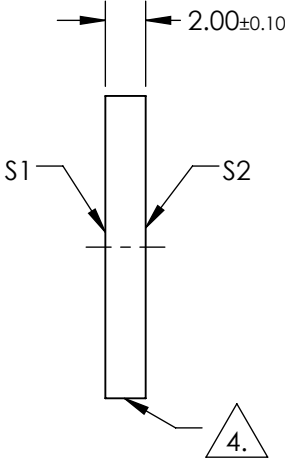
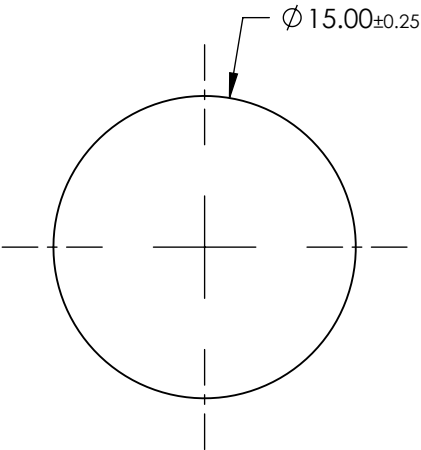
S1: R(AVG) ≤ 0.5% FROM 600-1050nm @ 0° AOI

S2: R(AVG) ≤ 0.5% FROM 600-1050nm @ 0° AOI

3. FINE GRIND SURFACE

- 4. POWER, IRREGULARITY, AND SURFACE QUALITY SPECIFICATIONS
APPLY ACROSS CLEAR APERTURE
- 5. ROHS COMPLIANT

**FOR INFORMATION ONLY:
DO NOT MANUFACTURE
PARTS TO THIS DRAWING**



	S1	S2
SHAPE	PLANO	PLANO
CLEAR APERTURE	Ø13.5	Ø13.5
SURFACE FLATNESS	2λ	2λ
SURFACE ROUGHNESS	0.1 MICRONS PER INCH	0.1 MICRONS PER INCH
SURFACE QUALITY	80-50	80-50
BIREFRINGENCE (n _o -n _e)	0.008	0.008
BEVEL	PROTECTIVE AS NEEDED	PROTECTIVE AS NEEDED

SPECIFICATIONS SUBJECT TO CHANGE WITHOUT NOTICE
DIMENSIONS ARE FOR REFERENCE ONLY

Edmund Optics®



ALL DIMS IN

mm

TITLE

15mm DIAMETER, NIR I COATED SAPPHIRE
WINDOW

DWG NO

36492

SHEET
1 OF 1