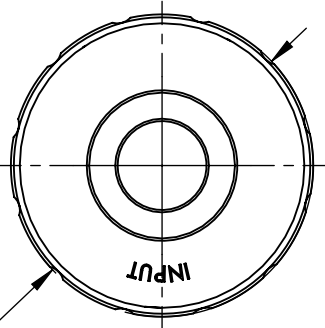
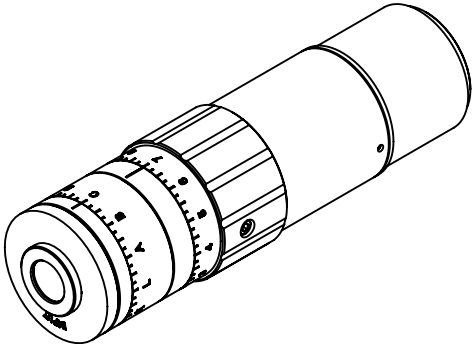
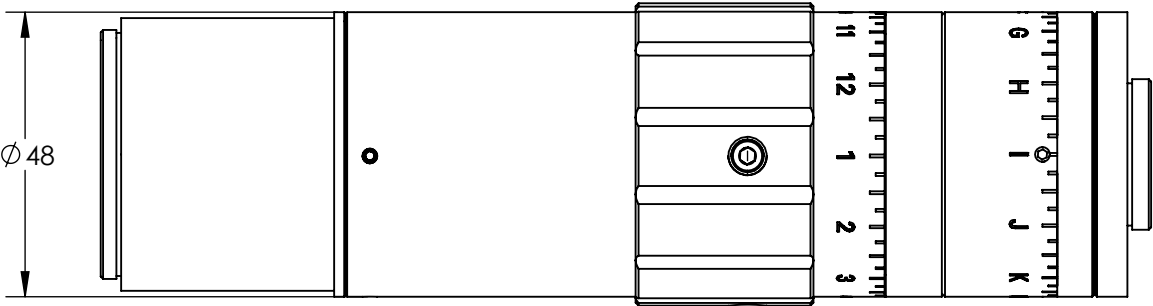
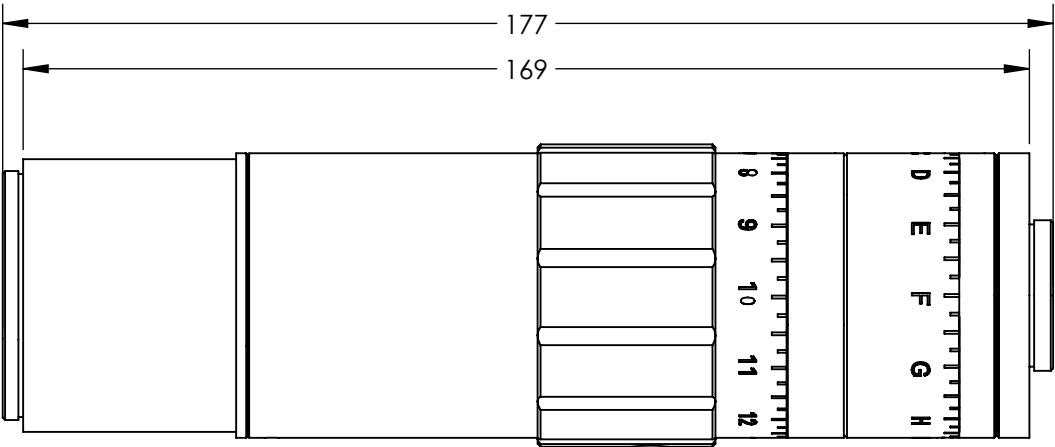


NOTES:

- 1. COATING (APPLY ACROSS CLEAR APERTURE)
LASER V-COAT
R(abs) 0.25% @ 1064 nm
- 2. RoHS COMPLIANT

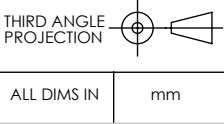


Ø51

**FOR INFORMATION ONLY:
DO NOT MANUFACTURE
PARTS TO THIS DRAWING**

SPECIFICATIONS SUBJECT TO CHANGE WITHOUT NOTICE
DIMENSIONS ARE FOR REFERENCE ONLY

REV. A	
DAMAGE THRESHOLD (PULSED)	10 J/cm ² (>3X), 5 J/cm ² (2-3X) @ 10ns, 20 Hz, 1064nm
DESIGN WAVELENGTH DWL (nm)	1064
TRANSMISSION	>97.5% @ DWL
TRANSMITTED WAVEFRONT, P-V	<λ/7 @ 1064nm for Input Beam ≤4 mm (2X-6X) <λ/7 @ 1064nm for Input Beam ≤2mm (>6X)



TITLE	1064 nm 2X - 8X VARIABLE BEAM EXPANDER
DWG NO	87568
SHEET	1 OF 1