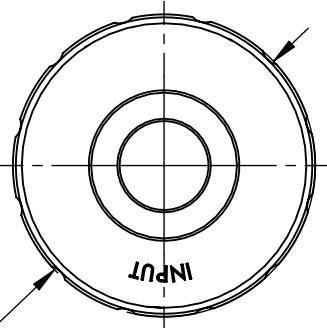
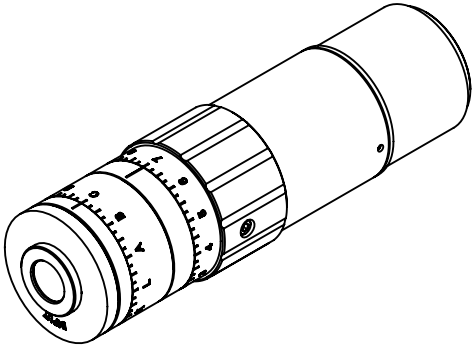
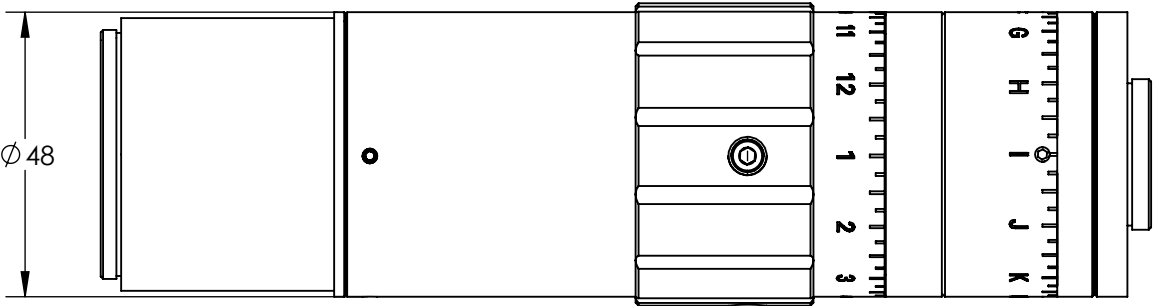
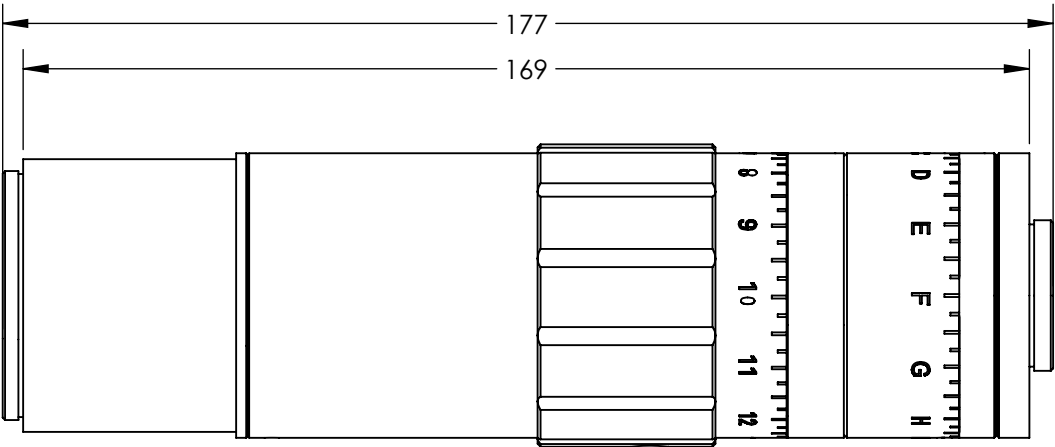


NOTES:

- 1. COATING (APPLY ACROSS CLEAR APERTURE)  
LASER V-COAT  
R(abs) 0.25% @ 532 nm
- 2. RoHS COMPLIANT



Ø51

**FOR INFORMATION ONLY:  
DO NOT MANUFACTURE  
PARTS TO THIS DRAWING**

SPECIFICATIONS SUBJECT TO CHANGE WITHOUT NOTICE  
DIMENSIONS ARE FOR REFERENCE ONLY

REV. A	
DAMAGE THRESHOLD (PULSED)	5 J/cm <sup>2</sup> (>3X), 3 J/cm <sup>2</sup> (2-3X) @ 10ns, 20 Hz, 532nm
DESIGN WAVELENGTH DWL (nm)	532
TRANSMISSION	>97.5% @ DWL
TRANSMITTED WAVEFRONT, P-V	<λ/4 @ 532nm for Input Beam ≤4mm (2X-6X) <λ/4 @ 532nm for Input Beam ≤2mm (>6X)



ALL DIMS IN mm

**Edmund Optics®**

TITLE 532 nm 2X - 8X VARIABLE BEAM EXPANDER

DWG NO 87567 SHEET 1 OF 1