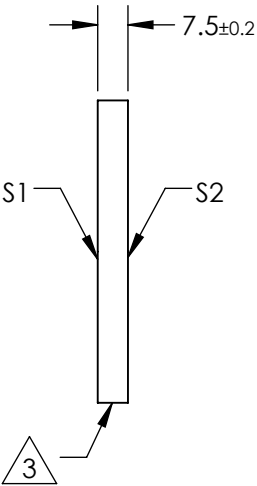
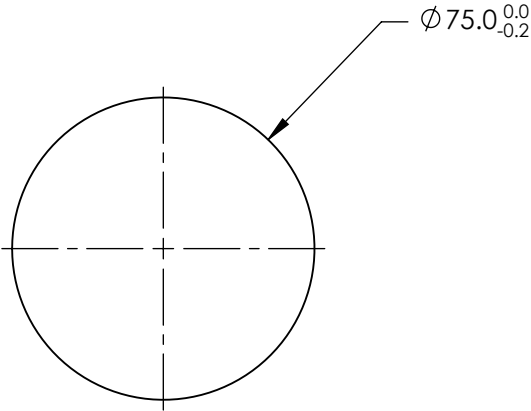


NOTES:

1. SUBSTRATE MATERIAL:
Fused Silica
2. COATING (APPLY ACROSS CLEAR APERTURE)

S1: UV Enhanced Aluminum
R(avg) >89% @ 250 - 450nm
R(avg) >85% @ 250 - 700nm
S2: NONE
3. FINE GROUND SURFACE
4. PARALLELISM: 30 ARCSEC
5. RoHS COMPLIANT



**FOR INFORMATION ONLY:
DO NOT MANUFACTURE
PARTS TO THIS DRAWING**

SPECIFICATIONS SUBJECT TO CHANGE WITHOUT NOTICE
DIMENSIONS ARE FOR REFERENCE ONLY

REV. A	S1	S2	<div><div><div>EO[®]</div><div>Edmund Optics[®]</div></div></div>				
SHAPE	PLANO	PLANO	<div>THIRD ANGLE PROJECTION</div> <div></div>		TITLE	75mm Diameter UV Enhanced Aluminum Coated, λ/10 Mirror	
SURFACE QUALITY	20-10	N/A			DWG NO	84425	SHEET 1 OF 1
SURFACE FLATNESS	λ/10	COMMERICAL POLISH					
CLEAR APERTURE	90%	N/A					
BEVEL	PROTECTIVE AS NEEDED	PROTECTIVE AS NEEDED			ALL DIMS IN	mm	