

NOTES:

1. SUBSTRATE MATERIAL:
N-BK7
2. COATING (APPLY ACROSS CLEAR APERTURE)

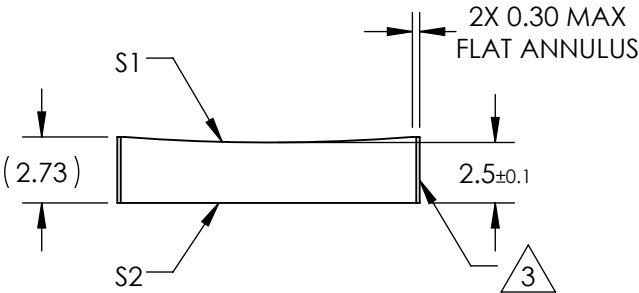
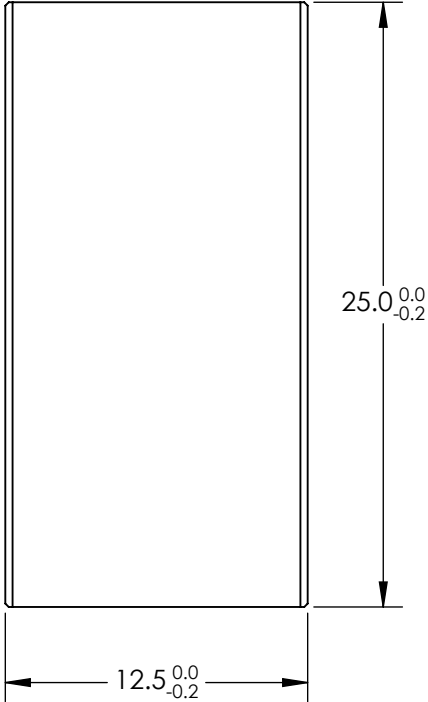
S1 & S2: VIS-NIR

R(abs) $\leq 0.25\%$ @ 880nm
R(avg) $\leq 1.25\%$ @ 400 - 870nm
R(avg) $\leq 1.25\%$ @ 890 - 1000nm


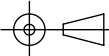
3. FINE GROUND SURFACE

4. POWER, IRREGULARITY, AND SURFACE QUALITY
SPECIFICATIONS APPLY ACROSS CLEAR APERTURE
5. RoHS COMPLIANT

**FOR INFORMATION ONLY:
DO NOT MANUFACTURE
PARTS TO THIS DRAWING**



SPECIFICATIONS SUBJECT TO CHANGE WITHOUT NOTICE
DIMENSIONS ARE FOR REFERENCE ONLY

REV. A	S1	S2	 Edmund Optics®				
SHAPE	CONVEX	PLANO					
RADIUS	77.52	∞	EFL	-150	BFL	-151.65	
SURFACE QUALITY	60-40	60-40			TITLE	12.5mm H X 25mm L X -150mm FL VIS-NIR COATED, CYLINDER LENS	
CLEAR APERTURE	11.50 X 24.00	11.50 X 24.00					
COATING APERTURE	11.50 X 24.00	11.50 X 24.00					
BEVEL	PROTECTED AS NEEDED	PROTECTED AS NEEDED	ALL DIMS IN	mm	DWG NO	69842	SHEET 1 OF 1