

NOTES:

1. SUBSTRATE MATERIAL:
N-BK7
2. COATING (APPLY ACROSS CLEAR APERTURE)

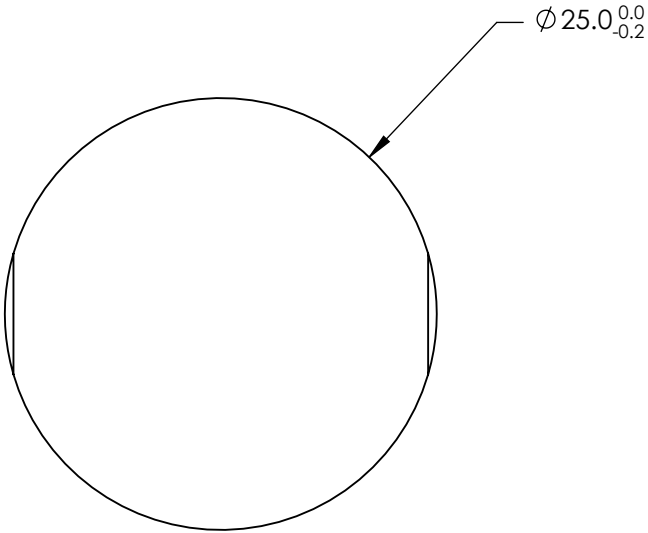
S1 & S2: VIS-NIR

R(abs) $\leq 0.25\%$ @ 880nm
R(avg) $\leq 1.25\%$ @ 400 - 870nm
R(avg) $\leq 1.25\%$ @ 890 - 1000nm

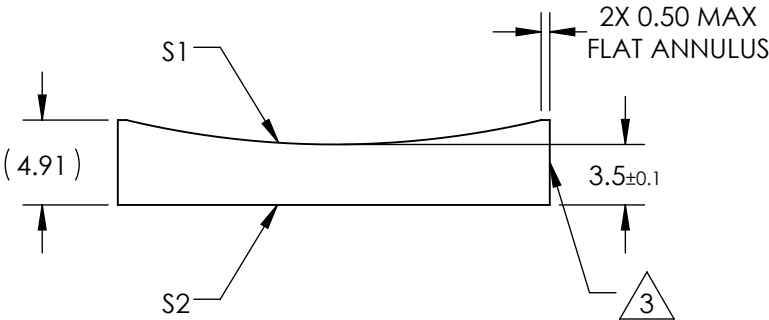
3. FINE GROUND SURFACE

4. POWER, IRREGULARITY, AND SURFACE QUALITY
SPECIFICATIONS APPLY ACROSS CLEAR APERTURE


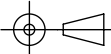
5. RoHS COMPLIANT



**FOR INFORMATION ONLY:
DO NOT MANUFACTURE
PARTS TO THIS DRAWING**



SPECIFICATIONS SUBJECT TO CHANGE WITHOUT NOTICE
DIMENSIONS ARE FOR REFERENCE ONLY

REV. A	S1	S2				
SHAPE	CONVEX	PLANO	EFL	-100	 Edmund Optics®	
RADIUS	-51.68	∞	BFL	-102.31		
SURFACE QUALITY	60-40	60-40			TITLE	25mm DIA X -100mm FL VIS-NIR COATED, CYLINDER LENS
CLEAR APERTURE	Ø24.00	Ø24.00				
COATING APERTURE	Ø24.00	Ø24.00				
BEVEL	PROTECTED AS NEEDED	PROTECTED AS NEEDED	ALL DIMS IN	mm	DWG NO	69845
					SHEET 1 OF 1	