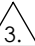


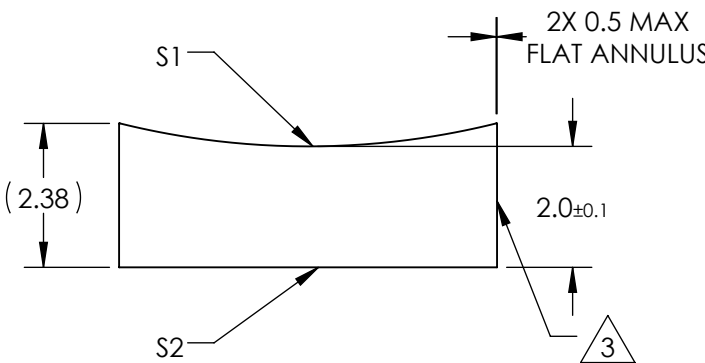
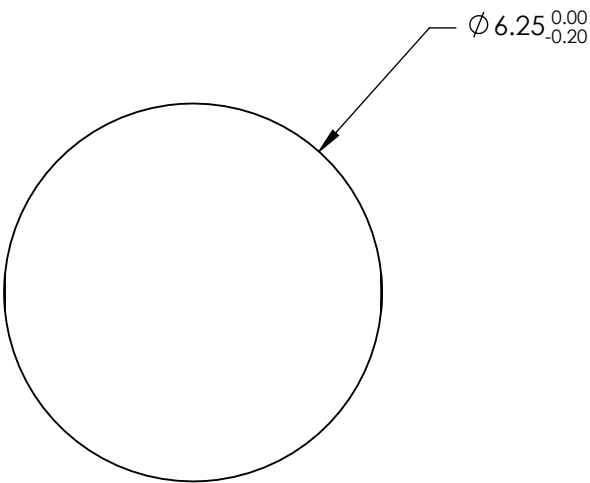
NOTES:

1. SUBSTRATE MATERIAL:
N-BK7
2. COATING (APPLY ACROSS CLEAR APERTURE)


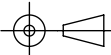
S1 & S2: MgF2

R(avg) ≤1.75% @ 400 - 700nm
3.  FINE GROUND SURFACE
4. POWER, IRREGULARITY, AND SURFACE QUALITY
SPECIFICAIONS APPLY ACROSS CLEAR APERTURE
5. RoHS COMPLIANT

**FOR INFORMATION ONLY:
DO NOT MANUFACTURE
PARTS TO THIS DRAWING**



SPECIFICATIONS SUBJECT TO CHANGE WITHOUT NOTICE
DIMENSIONS ARE FOR REFERENCE ONLY

REV. A	S1	S2	 Edmund Optics®					
SHAPE	CONVEX	PLANO					EFL	-25
RADIUS	-12.92	∞					BFL	-26.31
SURFACE QUALITY	60-40	60-40			TITLE	6.25mm DIA X -25mm FL MgF2 COATED, CYLINDER LENS		
CLEAR APERTURE	Ø5.25	Ø5.25						
COATING APERTURE	Ø5.25	Ø5.25						
BEVEL	PROTECTED AS NEEDED	PROTECTED AS NEEDED	ALL DIMS IN	mm	DWG NO	48373	SHEET 1 OF 1	