

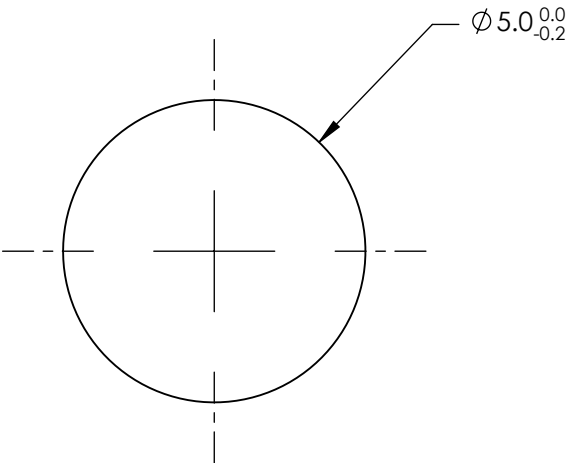
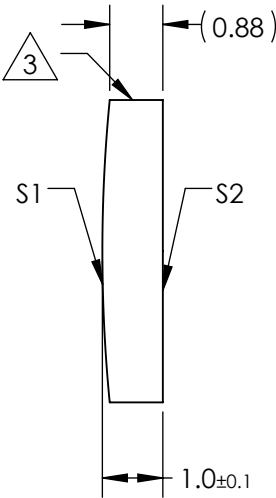
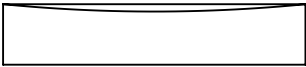
NOTES:

1. SUBSTRATE MATERIAL:
N-BK7
2. COATING (APPLY ACROSS CLEAR APERTURE)

S1 & S2: NONE


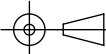
3. FINE GROUND SURFACE

4. POWER, IRREGULARITY, AND SURFACE QUALITY
SPECIFICATIONS APPLY ACROSS CLEAR APERTURE
5. RoHS COMPLIANT



**FOR INFORMATION ONLY:
DO NOT MANUFACTURE
PARTS TO THIS DRAWING**

SPECIFICATIONS SUBJECT TO CHANGE WITHOUT NOTICE
DIMENSIONS ARE FOR REFERENCE ONLY

REV. A	S1	S2	<div><div>EFL</div><div>50</div></div> <div><div>BFL</div><div>49.34</div></div> <div><div> Edmund Optics®</div></div>						
SHAPE	CONVEX	PLANO							
RADIUS	25.8	∞	<div><div>THIRD ANGLE PROJECTION</div><div></div><div>TITLE</div><div>5mm DIA X 50mm FL UNCOATED, CYLINDER LENS</div></div>						
SURFACE QUALITY	60-40	60-40							
CLEAR APERTURE	Ø4.00	Ø4.00	<div><div>ALL DIMS IN</div><div>mm</div><div>DWG NO</div><div>45983</div><div>SHEET 1 OF 1</div></div>						
COATING APERTURE	Ø4.00	Ø4.00							
BEVEL	PROTECTED AS NEEDED	PROTECTED AS NEEDED							