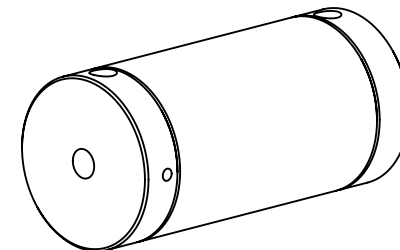
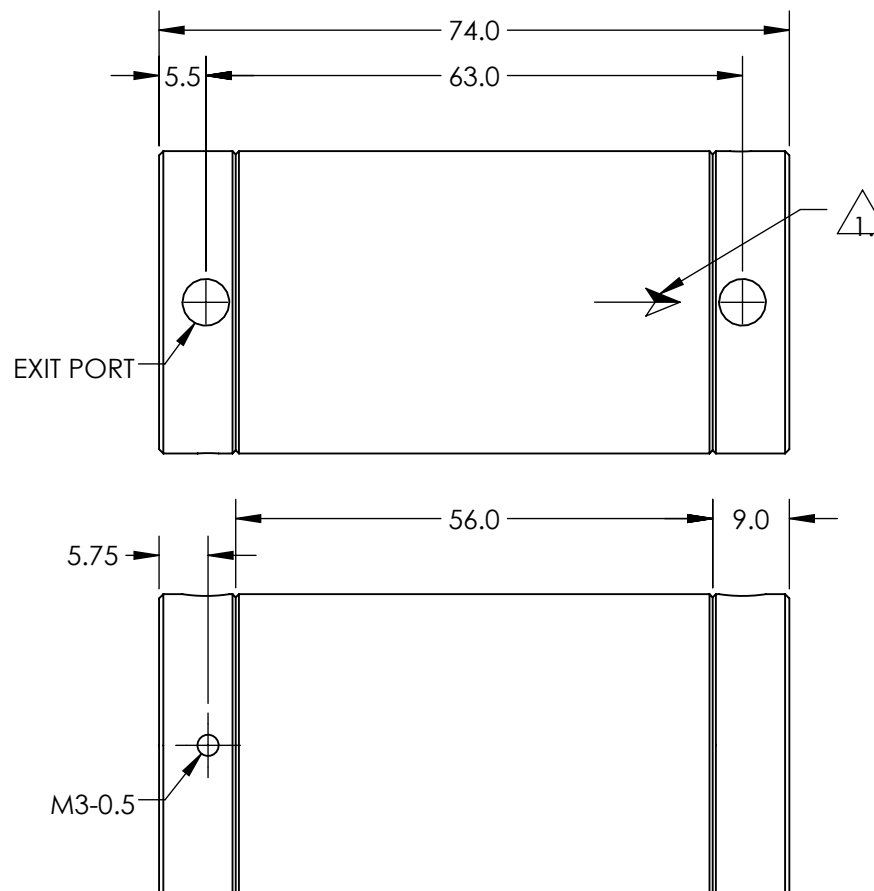
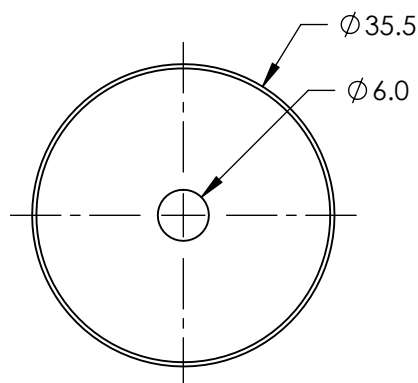


NOTES:

1.  ARROW INDICATOR SHOWS BEAM PATH
2. RoHS COMPLIANT

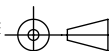


**FOR INFORMATION ONLY:  
DO NOT MANUFACTURE  
PARTS TO THIS DRAWING**

SPECIFICATIONS SUBJECT TO CHANGE WITHOUT NOTICE  
DIMENSIONS ARE FOR REFERENCE ONLY

CLEAR APERTURE (mm)	4.7
DAMAGE THRESHOLD (CW)	43 W, 4 kW/cm <sup>2</sup> @ DWL
DESIGN WAVELENGTH DWL (nm)	780
MIN ISOLATION @ DWL (dB)	60
OPERATING TEMPERATURE	+15 C to 40 C
TRANSMISSION (%)	90 (typical)
TYPICAL ISOLATION @ DWL (dB)	67

THIRD ANGLE  
PROJECTION



ALL DIMS IN

mm



**Edmund Optics®**

TITLE

780nm Dual Stage Free-Space Optical  
Isolator

DWG NO

35983

SHEET  
1 OF 1