

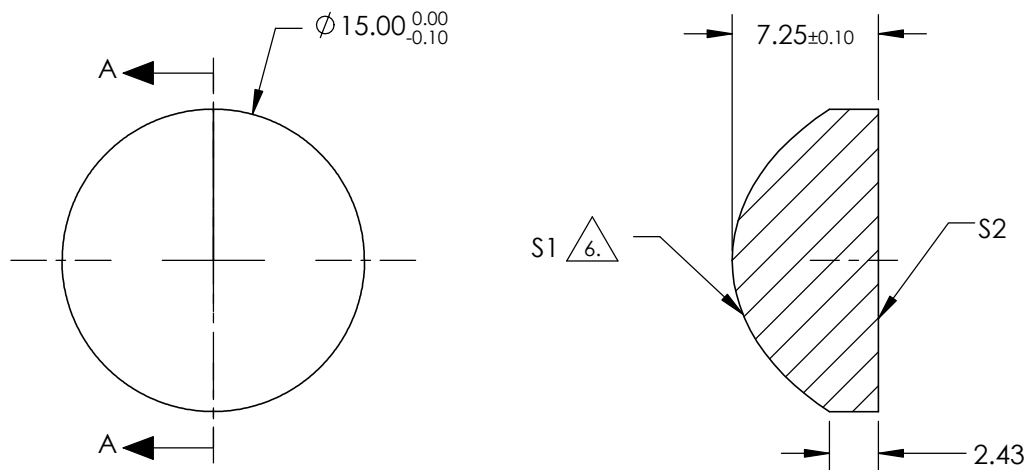
# NOTES:

- SUBSTRATE: FUSED SILICA
- COATING (APPLY ACROSS CLEAR APERTURE)  
S1: R(avg) ≤1.5% @ 600 - 1050nm  
S2: R(avg) ≤1.5% @ 600 - 1050nm
- EDGES: FINE GROUND
- CENTERING: <3-5 ARCMIN
- ASPHERE FIGURE ERROR: 0.75µm RMS

**FOR INFORMATION ONLY:  
DO NOT MANUFACTURE  
PARTS TO THIS DRAWING**

△ ASPHERIC SURFACE DESCRIBED BY (REF. COEFFICIENT TABLE)

$$Z_{ASPH}(Y) = \frac{(\frac{1}{RADIUS}) * Y^2}{1 + \sqrt{1 - (1+k) * (\frac{1}{RADIUS})^2 * Y^2}} + D * Y^2 + E * Y^4 + F * Y^6 + G * Y^8 + H * Y^{10} + J * Y^{12} + L * Y^{14}$$



SECTION A-A

COEFFICIENT TABLE △7	
COEFFICIENT	S1
k	-2.076598
D	0
E	5.7879951E-4
F	-3.1626095E-6
G	3.4718029E-8
H	-1.0192328E-10
J	0
L	0

SPECIFICATIONS SUBJECT TO CHANGE WITHOUT NOTICE DIMENSIONS ARE FOR REFERENCE ONLY

REV. A	S1	S2	EFL @ 587.6nm	15	 Edmund Optics®		
SHAPE	CONVEX	PLANO	BFL @ 587.6nm	10.029			
RADIUS	6.877	INFINITY			TITLE	15mm DIA 0.50 NA NIR COATED, UV FUSED SILICA ASPHERIC LENS	
SURFACE QUALITY	60-40	60-40					
CLEAR APERTURE	90%	90%			DWG NO	49591	SHEET 1 OF 1
BEVEL MAX	PROTECTIVE AS NEEDED	PROTECTIVE AS NEEDED					
			ALL DIMS IN	mm			