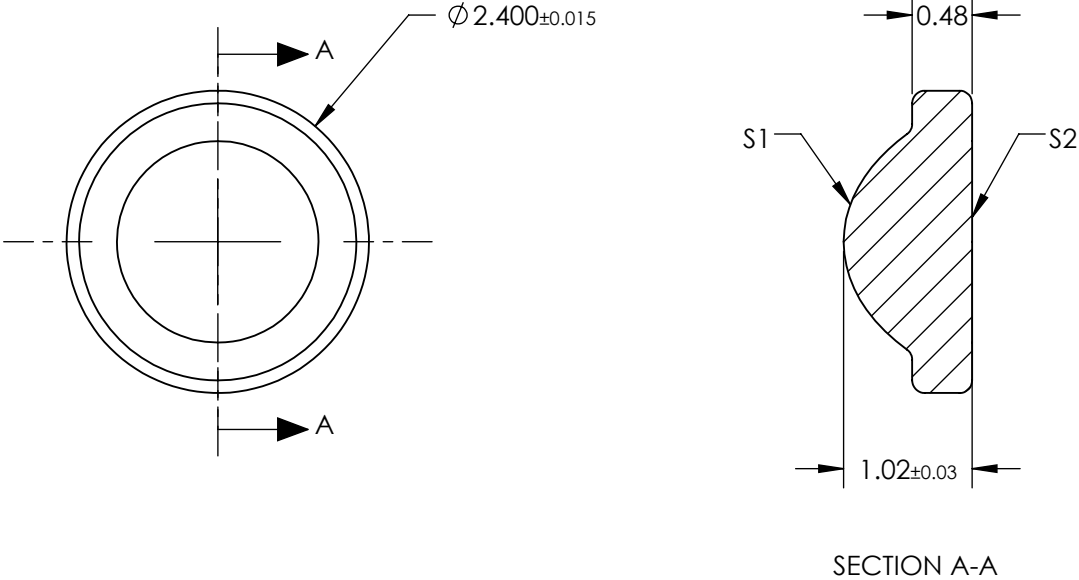



NOTES:

- 1. SUBSTRATE:  
D-ZK3
- 2. NUMERICAL APERTURE: 0.58
- 3. COATING  
S1 & S2: R(AVG) ≤ 0.5% @ 350 - 700nm
- 4. FOCAL LENGTH TOLERANCE: ±1%
- 5. TRANSMITTED WAVEFRONT ERROR (λ, RMS): < 0.070



**FOR INFORMATION ONLY:**  
**DO NOT MANUFACTURE**  
**PARTS TO THIS DRAWING**

SPECIFICATIONS SUBJECT TO CHANGE WITHOUT NOTICE DIMENSIONS ARE FOR REFERENCE ONLY

	S1	S2	EFL	1.45	 <b>Edmund Optics®</b>		
			BFL	0.81			
SHAPE	CONVEX	PLANO			TITLE	0.58 NA 1.45mm FL 350-700nm AR COATED, MOLDED ASPHERIC LENS	
SURFACE QUALITY	40-20	40-20					
CLEAR APERTURE	Ø1.60	Ø1.60	ALL DIMS IN	mm	DWG NO	83613	SHEET 1 OF 1
BEVEL MAX	PROTECTIVE AS NEEDED	PROTECTIVE AS NEEDED					