

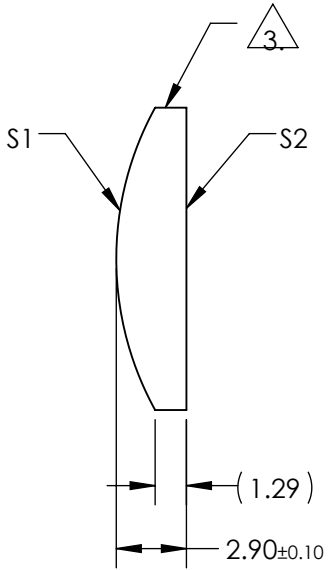
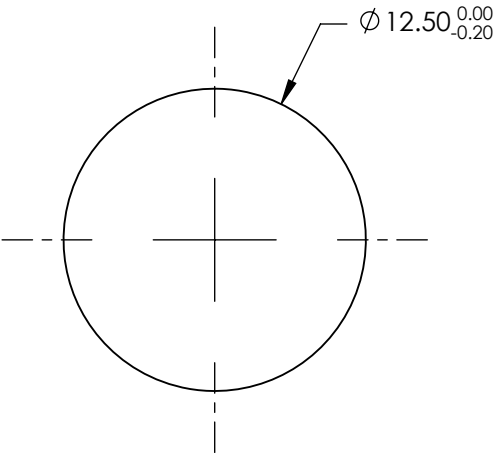
NOTES:

1. SUBSTRATE MATERIAL:
N-BK7
2. COATING (APPLY ACROSS CLEAR APERTURE)

S1 & S2: VIS-NIR (400-1000nm)
R(ABS) $\leq 0.25\%$ @ 880nm
R(AVG) $\leq 1.25\%$ @ 400 - 870nm
R(AVG) $\leq 1.25\%$ @ 890 - 1000nm

3. FINE GROUND SURFACE

4. RoHS COMPLIANT



**FOR INFORMATION ONLY:
DO NOT MANUFACTURE
PARTS TO THIS DRAWING**

SPECIFICATIONS SUBJECT TO CHANGE WITHOUT NOTICE
DIMENSIONS ARE FOR REFERENCE ONLY

	S1	S2	EFL	25.00	 Edmund Optics®		
SHAPE	CONVEX	PLANO	BFL	23.09			
RADIUS	12.96	INFINITY			TITLE	12.5mm DIA X 25mm FL VIS-NIR COATED, CYLINDER LENS	
SURFACE QUALITY	60-40	60-40					
CLEAR APERTURE	Ø11.50	Ø11.50	ALL DIMS IN		DWG NO	69769	
BEVEL	PROTECTIVE AS NEEDED	PROTECTIVE AS NEEDED					
			mm				SHEET 1 OF 1