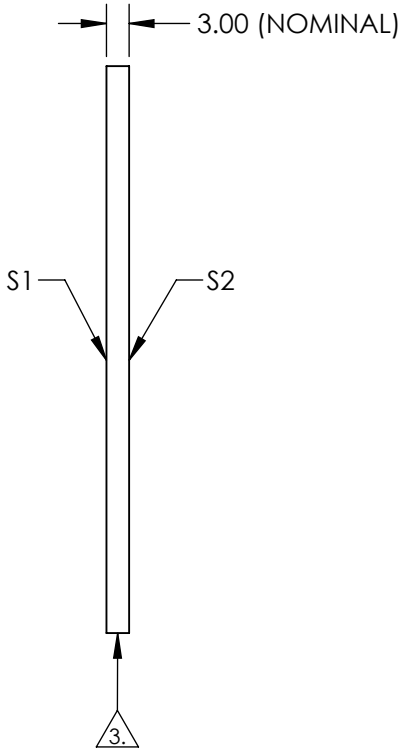
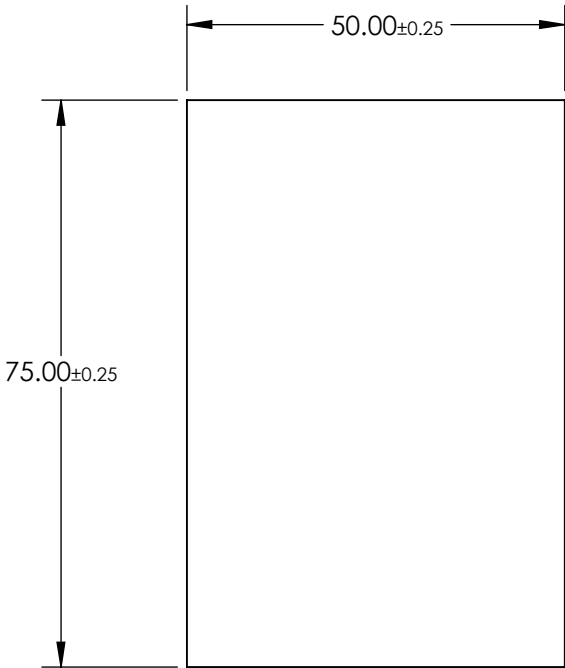


NOTES:

1. SUBSTRATE: Float Glass
2. COATING (APPLY ACROSS CLEAR APERTURE)  
S1: Enhanced Aluminum (450-650nm)  
R(AVG) ≥95% @ 450 - 650nm @ 45°
- S2: NONE

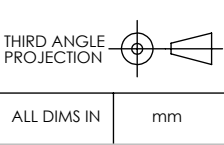
3. EDGES SEAMED
4. RoHS COMPLIANT



**FOR INFORMATION ONLY:  
DO NOT MANUFACTURE  
PARTS TO THIS DRAWING**

SPECIFICATIONS SUBJECT TO CHANGE WITHOUT NOTICE  
DIMENSIONS ARE FOR REFERENCE ONLY

	S1	S2
SHAPE	PLANO	PLANO
SURFACE QUALITY	60-40	N/A
SURFACE FLATNESS	4 - 6λ	N/A
CLEAR APERTURE	47.50 x 71.25	N/A
BEVEL	PROTECTED AS NEEDED	PROTECTED AS NEEDED



**EO**® Edmund Optics®

TITLE	50 x 75mm Enhanced Aluminum, 4-6λ Mirror
DWG NO	48451
SHEET	1 OF 1