

NOTES:

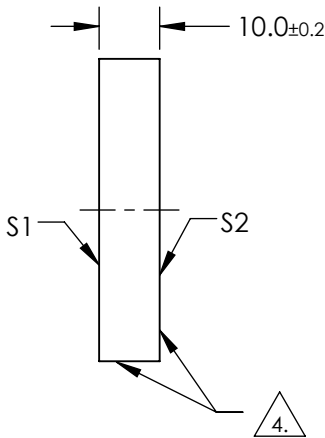
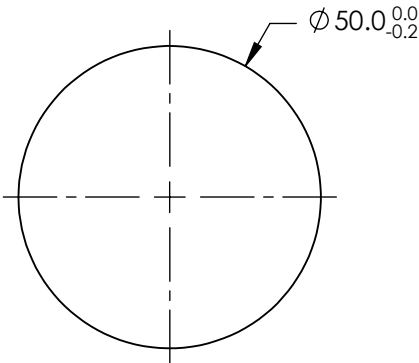
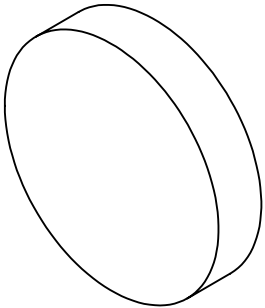
- 1. SUBSTRATE: FUSED SILICA
- 2. SURFACE S2 TO BE PARALLEL WITH SURFACE S1 TO WITHIN <3 arcmin
- 3. COATING SPECIFICATIONS APPLY ACROSS COATING APERTURE
  - S1: R(avg) ≥78% @ 120 - 125nm
  - R(avg) ≥88% @ 120 - 600nm
  - S2: UNCOATED

4. S2 & EDGES: FINE GRIND SURFACE

5. POWER, IRREGULARITY, AND SURFACE QUALITY SPECIFICATIONS  
APPLY ACROSS CLEAR APERTURE

6. ROHS COMPLIANT

FOR INFORMATION ONLY:  
DO NOT MANUFACTURE  
PARTS TO THIS DRAWING



	S1	S2
SHAPE	PLANO	PLANO
SURFACE QUALITY	10-5	N/A
SURFACE FLATNESS	$\lambda/10$	N/A
COATING TYPE	METAL	N/A
COATING	VUV ENHANCED ALUMINUM	N/A
BEVEL	PROTECTIVE AS NEEDED	PROTECTIVE AS NEEDED

SPECIFICATIONS SUBJECT TO CHANGE WITHOUT NOTICE  
DIMENSIONS ARE FOR REFERENCE ONLY

**Edmund Optics®**



ALL DIMS IN

mm

TITLE

50mm Dia., Vacuum UV (VUV) Mirror

DWG NO

33914

SHEET  
1 OF 1