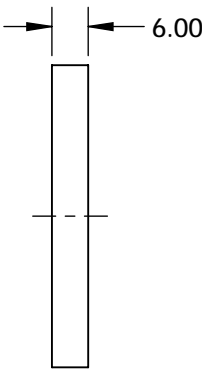
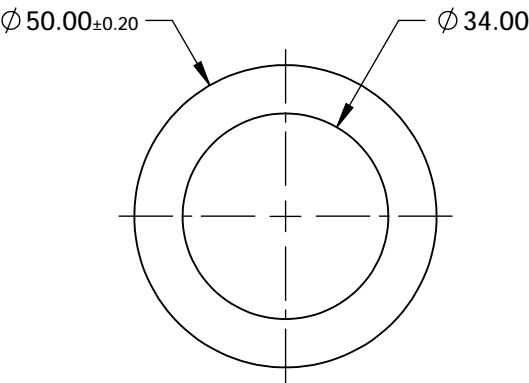
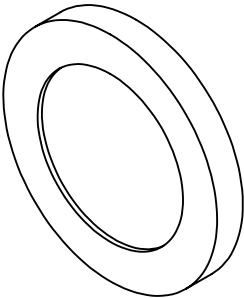


NOTES:  
1. SUBSTRATE:  
ZINC SELENIDE (ZnSe)



**FOR INFORMATION ONLY:  
DO NOT MANUFACTURE  
PARTS TO THIS DRAWING**

SPECIFICATIONS SUBJECT TO CHANGE WITHOUT NOTICE  
DIMENSIONS ARE FOR REFERENCE ONLY

DAMAGE THRESHOLD	50W/cm <sup>2</sup>
EXTINCTION RATIO	150:1 @ 3µm; 300:1 @ 10µm
PARALLELISM	≤3 ARCMIN
SURFACE FLATNESS	λ/10 @ 10.6µm
SURFACE QUALITY	60-40
TRANSMISSION	>50% @ 2.5 - 19µm

THIRD ANGLE  
PROJECTION

ALL DIMS IN

mm

 **Edmund Optics®**

TITLE

Ø50mm, ZnSe, IR HOLOGRAPHIC WIRE GRID  
POLARIZER

DWG NO

62773

SHEET  
1 OF 1