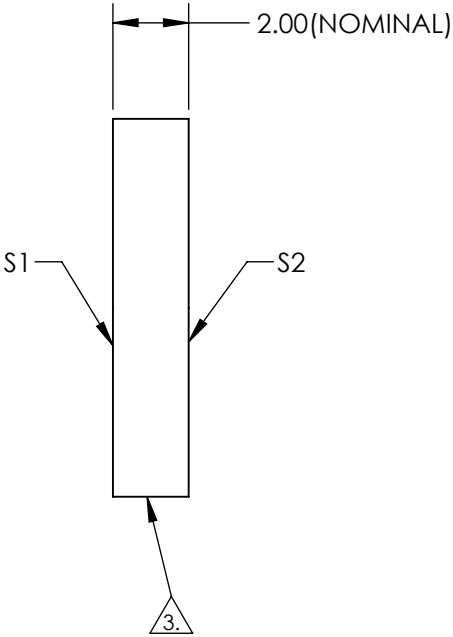
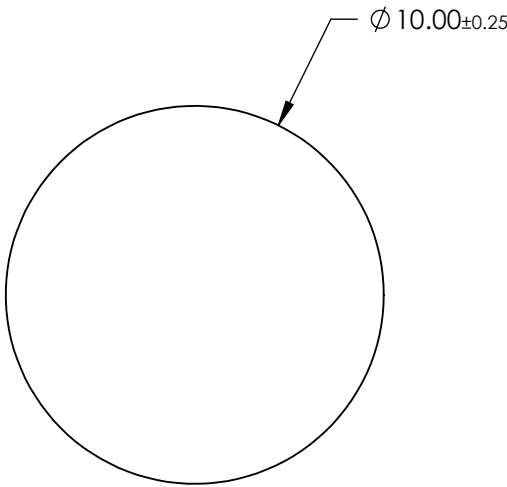


NOTES:

- 1. SUBSTRATE: Float Glass
- 2. COATING (APPLY ACROSS CLEAR APERTURE)
  - S1: Enhanced Aluminum (450-650nm)
  - R(AVG) ≥95% @ 450 - 650nm @ 45°
  - S2: NONE
- 3. EDGES GROUND
- 4. RoHS COMPLIANT




**FOR INFORMATION ONLY:**  
**DO NOT MANUFACTURE**  
**PARTS TO THIS DRAWING**

SPECIFICATIONS SUBJECT TO CHANGE WITHOUT NOTICE  
DIMENSIONS ARE FOR REFERENCE ONLY

	S1	S2
SHAPE	PLANO	PLANO
SURFACE QUALITY	60-40	N/A
SURFACE FLATNESS	4 - 6λ	N/A
CLEAR APERTURE	Ø 9.00	N/A
BEVEL	PROTECTED AS NEEDED	PROTECTED AS NEEDED

THIRD ANGLE  
PROJECTION

ALL DIMS IN mm

 **Edmund Optics®**

TITLE	10mm Dia Enhanced Aluminum, 4-6λ Mirror		
DWG NO	32941	SHEET 1 OF 1	