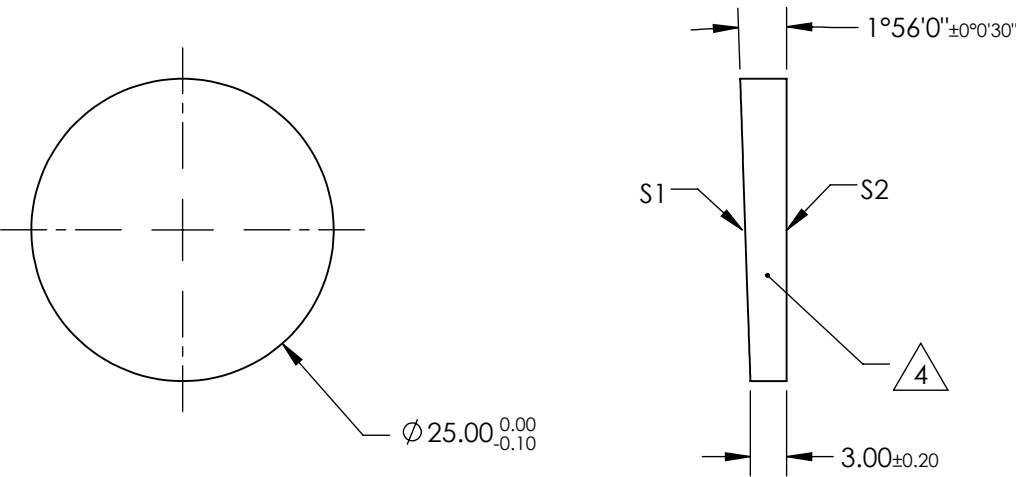


NOTES:

- 1. SUBSTRATE MATERIAL: N-BK7
- 2. ONLY ROHS-COMPLIANT MATERIALS ARE ACCEPTABLE.
DO NOT SUBSTITUTE WITH ROHS EXEMPT OR NON-COMPLIANT MATERIALS
- 3. COATING (APPLY ACROSS CLEAR APERTURE)
S1 & S2 : VIS 0°
- 4. FINE GRIND SURFACE
- 5. POWER, IRREGULARITY, AND SURFACE QUALITY SPECIFICATIONS APPLY ACROSS CLEAR APERTURE
- 6. CHIPS OUTSIDE OF CLEAR APERTURE: <0.5
- 7. CLEAR APERTURE AND COATING APERTURE ARE CENTERED ON SURFACES



**FOR INFORMATION ONLY:
DO NOT MANUFACTURE
PARTS TO THIS DRAWING**

	S1 & S2
SHAPE	PLANO
POWER (DIOPTERS)	1.74
ANGLE TOL. (ARCSEC)	±30
SURFACE QUALITY	20-10
SURFACE FLATNESS	λ/10
WAVELENGTH RANGE (nm)	425 - 675
CLEAR APERTURE	Ø22.50
IMAGE ORIENTATION	BEAM DEVIATION
BEVEL	PROTECTIVE AS NEEDED

SPECIFICATIONS SUBJECT TO CHANGE WITHOUT NOTICE
DIMENSIONS ARE FOR REFERENCE ONLY

 **Edmund Optics®**



ALL DIMS IN

mm

TITLE

1° NOM. VIS 0° COATED, WEDGE PRISM

DWG NO

49439

SHEET
1 OF 1