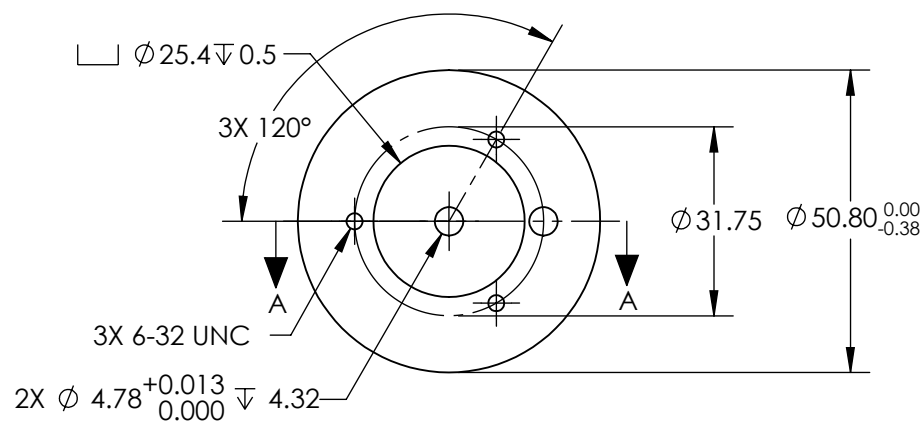
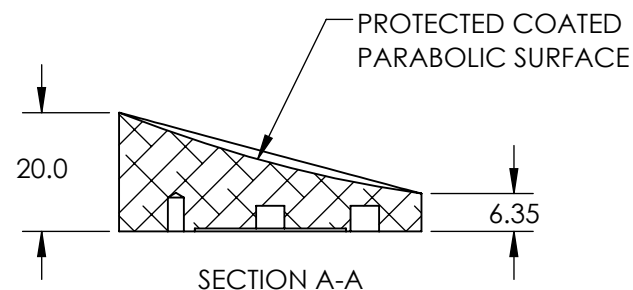
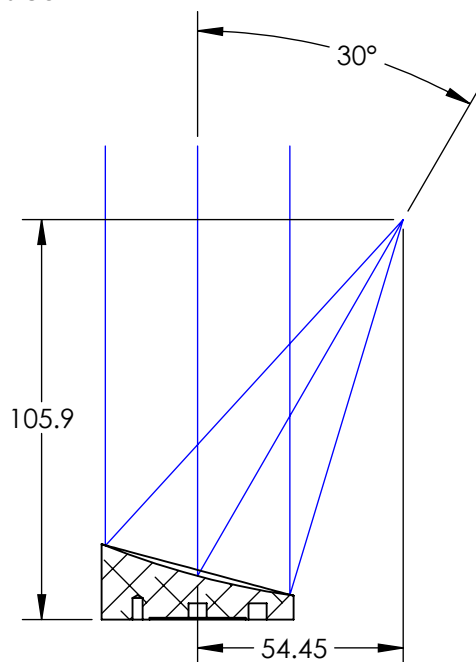
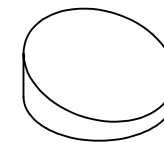


NOTES:

- SUBSTRATE MATERIAL:  
ALUMINUM
- FINISH (EXCEPT SURFACE S1):  
BLACK ANODIZED
- COATING (APPLY ACROSS CLEAR APERTURE)  
S1: BARE GOLD  
R(AVG) >94% @ 0.7-0.8 $\mu$ m  
R(AVG) >97% @ 0.8-2.0 $\mu$ m  
R(AVG) >98% @ 2-12 $\mu$ m  
  
SURFACE ROUGHNESS: <175 Å RMS
- FOCAL LENGTH TOLERANCE:  $\pm 1\%$
- ROHS COMPLIANT

**FOR INFORMATION ONLY:  
DO NOT MANUFACTURE  
PARTS TO THIS DRAWING**



SPECIFICATIONS SUBJECT TO CHANGE WITHOUT NOTICE  
DIMENSIONS ARE FOR REFERENCE ONLY

REV. A	S1
SHAPE	PARABOLIC
REFLECTIVE WAVEFRONT DISTORTION AT 632.8nm (RMS)	$\lambda/2$
SURFACE FIGURE AT 632.8nm (RMS)	$\lambda/4$
CLEAR APERTURE	90%
BEVEL	PROTECTIVE AS NEEDED

		<b>Edmund Optics®</b>	
THIRD ANGLE PROJECTION		TITLE	Ø50.8 X 108.9mm EFL 30° OAP BARE GOLD MIRROR 175Å
ALL DIMS IN	mm	DWG NO	84605
			SHEET 1 OF 1