

NOTES:

1. SUBSTRATE MATERIAL:
ALUMINUM

2. FINISH (EXCEPT SURFACE S1):
BLACK ANODIZED

3. COATING (APPLY ACROSS CLEAR APERTURE)

S1: PROTECTED GOLD

R(AVG) >94% @ 0.7-0.8 μ m

R(AVG) >97% @ 0.8-2.0 μ m

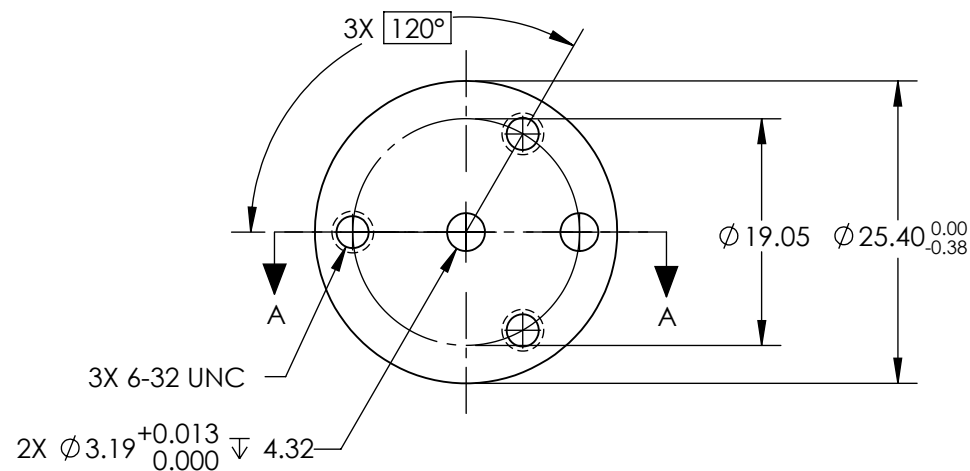
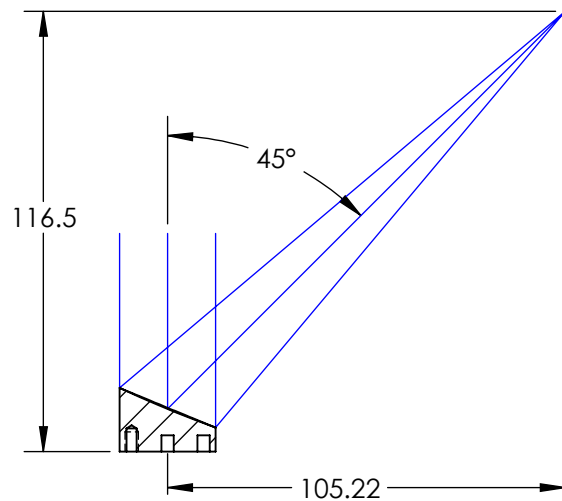
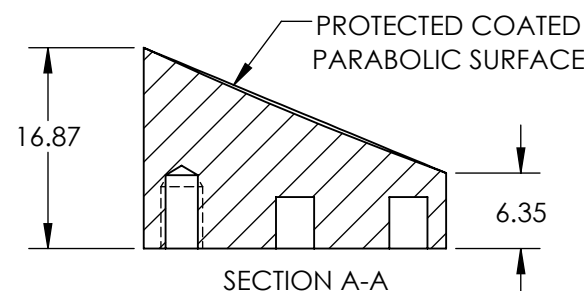
R(AVG) >98% @ 2-12 μ m

SURFACE ROUGHNESS : <175 Å RMS

4. EFL TOLERANCE: $\pm 1\%$

5. ROHS COMPLIANT

**FOR INFORMATION ONLY:
DO NOT MANUFACTURE
PARTS TO THIS DRAWING**



SPECIFICATIONS SUBJECT TO CHANGE WITHOUT NOTICE
DIMENSIONS ARE FOR REFERENCE ONLY

REV. A	S1
SHAPE	PARABOLIC
REFLECTIVE WAVEFRONT DISTORTION AT 632.8nm (RMS)	$\lambda/4$
SURFACE FIGURE AT 632.8nm (RMS)	$\lambda/8$
CLEAR APERTURE	90%
BEVEL	PROTECTIVE AS NEEDED

Edmund Optics®



ALL DIMS IN

mm

TITLE

$\varnothing 25.4$ X 148.8mm EFL 45° OAP PROTECTED
GOLD MIRROR 175Å

DWG NO

69164

SHEET
1 OF 1