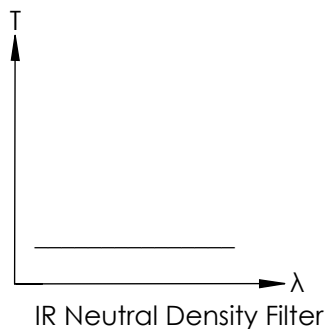
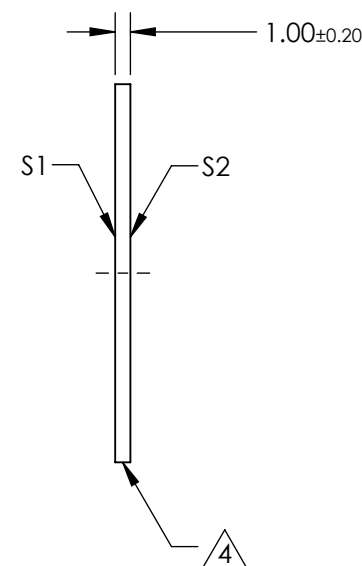
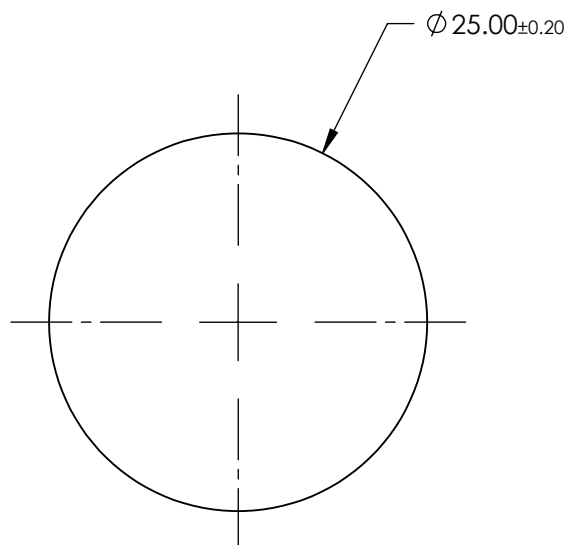
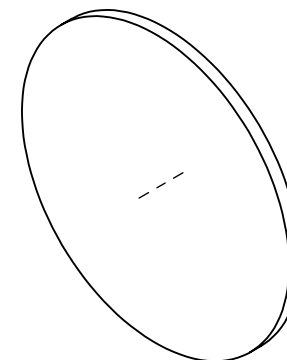


NOTES:

1. SUBSTRATE: Germanium (Ge)
2. SURFACE S2 TO BE PARALLEL WITH SURFACE S1 TO <10 ARCMIN
3. COATING (APPLY ACROSS CLEAR APERTURE)  
OPTICAL DENSITY = 1.5 @ 2 - 14  $\mu\text{m}$   
TRANSMISSION = 3.2 @ 2 - 14  $\mu\text{m}$
4. FINE GRIND SURFACE
5. POWER, IRREGULARITY, AND SURFACE QUALITY SPECIFICATIONS  
APPLY ACROSS CLEAR APERTURE
6. ROHS COMPLIANT

**FOR INFORMATION ONLY:  
DO NOT MANUFACTURE  
PARTS TO THIS DRAWING**



SPECIFICATIONS SUBJECT TO CHANGE WITHOUT NOTICE  
DIMENSIONS ARE FOR REFERENCE ONLY

	S1	S2
SHAPE	PLANO	PLANO
SURFACE FLATNESS	3 - 5 $\lambda$	3 - 5 $\lambda$
SURFACE QUALITY	80-50	80-50
CLEAR APERTURE	$\phi 22.5$	$\phi 22.5$
BEVEL	PROTECTED AS NEEDED	PROTECTED AS NEEDED

THIRD ANGLE PROJECTION		Edmund Optics®	
TITLE		1.5 OD, 25mm Dia., IR Neutral Density Filter	
ALL DIMS IN	mm	DWG NO	87200
		SHEET 33 OF 37	