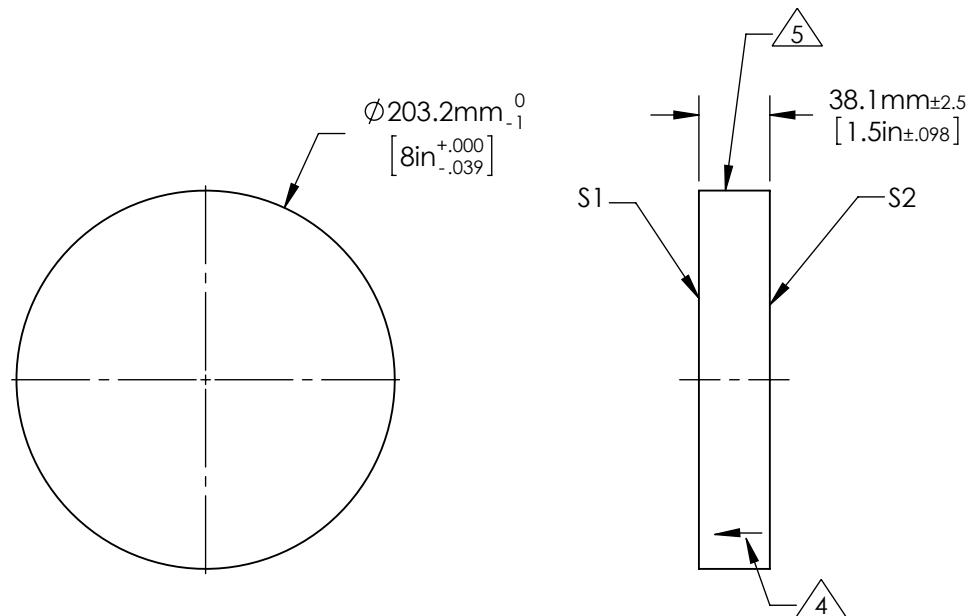


NOTES:


- 1. ALLOWABLE OPTICAL MATERIAL:
SCHOTT: Fused Silica 458/678
- 2. SURFACE S2 TO BE PARALLEL WITH SURFACE S1 TO < 3 ARCMIN
- 3. COATING (APPLY ACROSS COATING APERTURE)

S1: PROTECTED SILVER
Ravg >98% 500-800nm @ 0° AOI
Ravg >97% 2,000-10,000nm @ 0° AOI

- S2: NONE
- 4. ARROW ON EDGE POINTING TOWARDS SURFACE S1.
- 5. FINE GROUND SURFACE



FOR INFORMATION ONLY:
DO NOT MANUFACTURE PARTS TO THIS DRAWING

	S1	S2	EFL (AT 587.6nm)	NA	 Edmund Optics®	
SHAPE	PLANO	PLANO				
SURFACE ACCURACY AT 632.8nm	1/20 WAVE	NA			TITLE	1/20λ Optical Flat, Fused Silica, 8inch Diameter PROTECTED SILVER
SURFACE QUALITY	60 - 40	COMMERCIAL POLISH	BFL (AT 587.6nm)	NA	DWG NO	49048-577
CLEAR APERTURE	ϕ 182.9	ϕ 182.9				
BEVEL MAX FACE	1.0 x 45°	1.0 x 45°	ALL DIMS IN	mm		